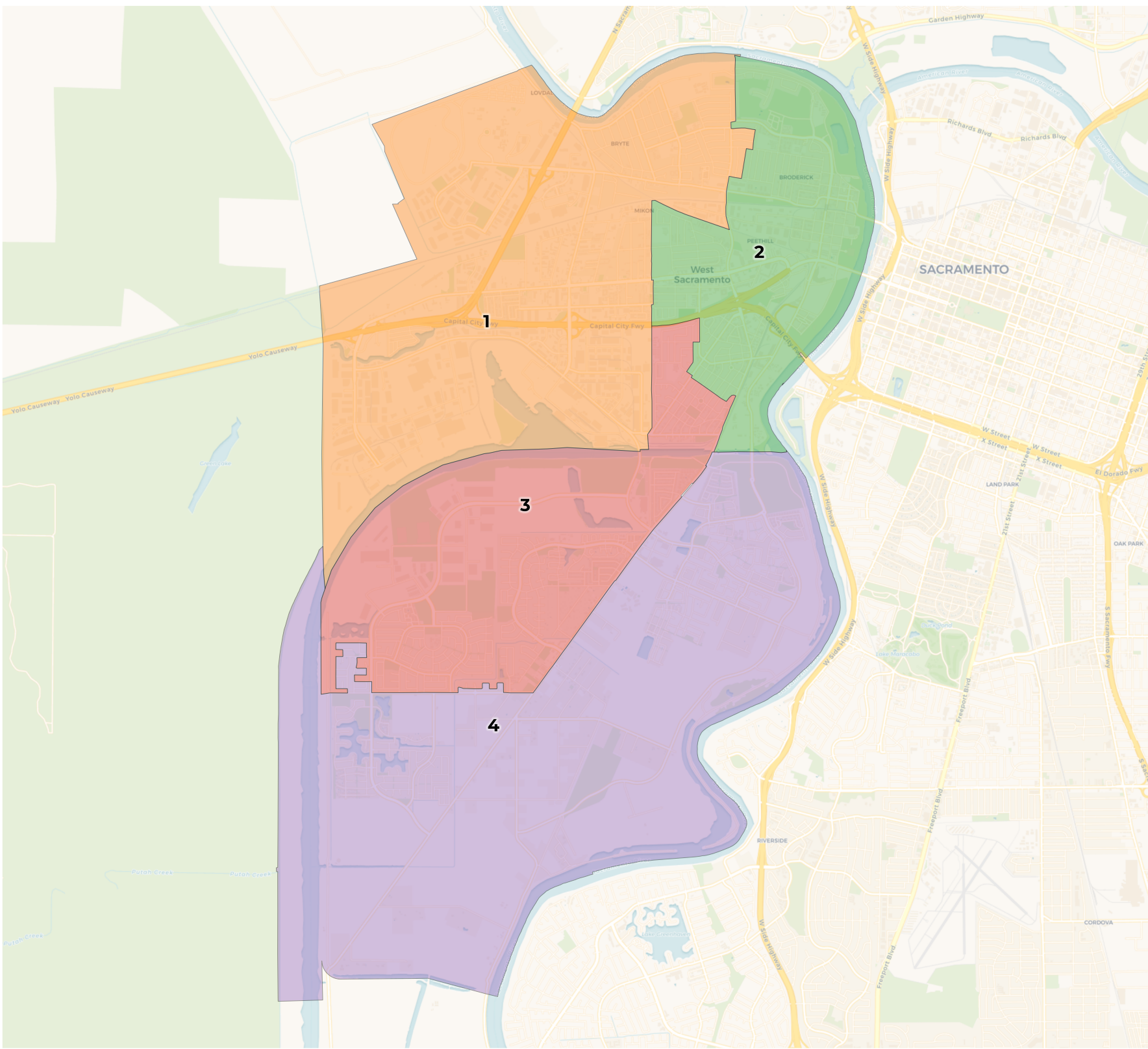


REDISTRICTING PARTNERS

City of West Sacramento
DistrictR ID 118475



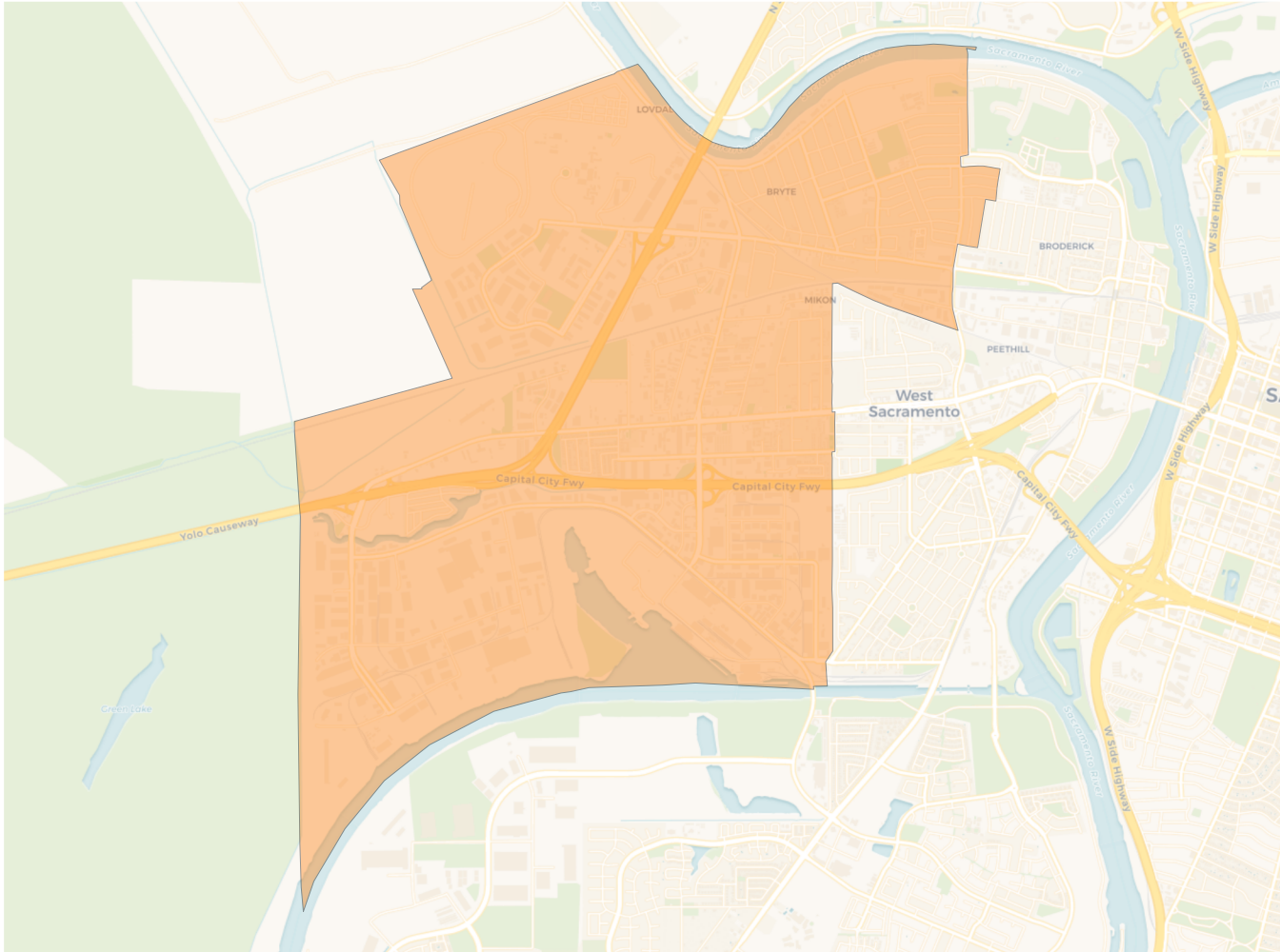
2020 Census

	1	2	3	4
Population	13,505	13,538	13,505	13,529
Deviation	-14	19	-14	10
Deviation %	-0.1%	0.1%	-0.1%	0.1%
Other	5,816	6,157	7,899	7,214
Other %	43.1%	45.5%	58.5%	53.3%
Latino	5,960	5,323	3,204	2,837
Latino %	44.1%	39.3%	23.7%	21.0%
Asian	1,188	1,289	1,826	2,841
Asian %	8.8%	9.5%	13.5%	21.0%
Black	541	769	576	637
Black %	4.0%	5.7%	4.3%	4.7%

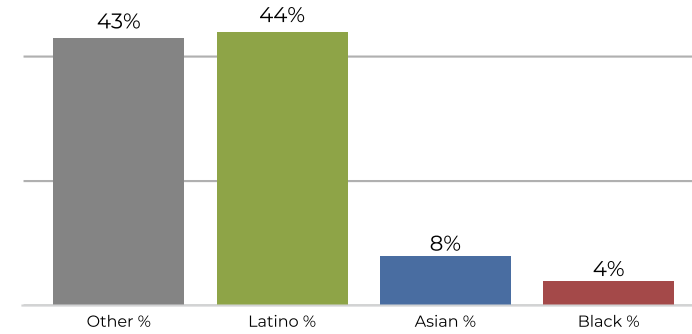
Citizen Voting Age Population (CVAP)

	1	2	3	4
Total CVAP	7,230	7,928	9,607	8,779
Other CVAP	3,929	4,513	6,819	5,388
Other CVAP %	54.3%	56.9%	71.0%	61.4%
Latino CVAP	2,108	2,236	1,734	1,067
Latino CVAP %	29.2%	28.2%	18.0%	12.2%
Asian CVAP	573	581	685	1,841
Asian CVAP %	7.9%	7.3%	7.1%	21.0%
Black CVAP	620	598	369	483
Black CVAP %	8.6%	7.5%	3.8%	5.5%

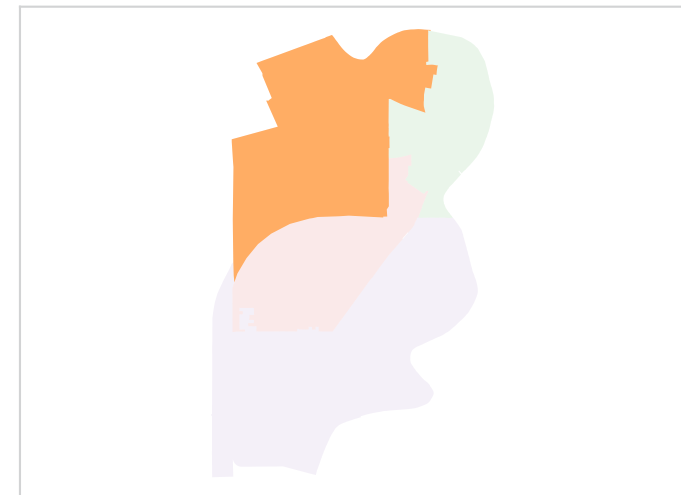
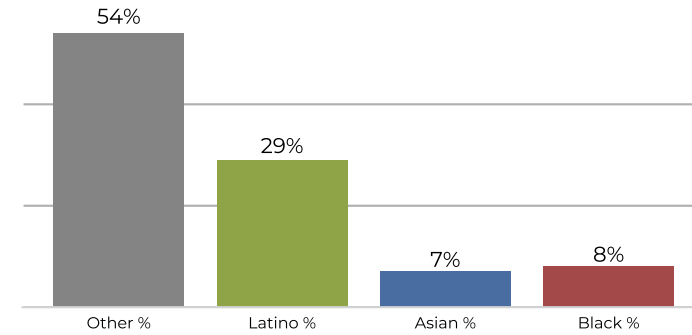
District 1



2020 Census

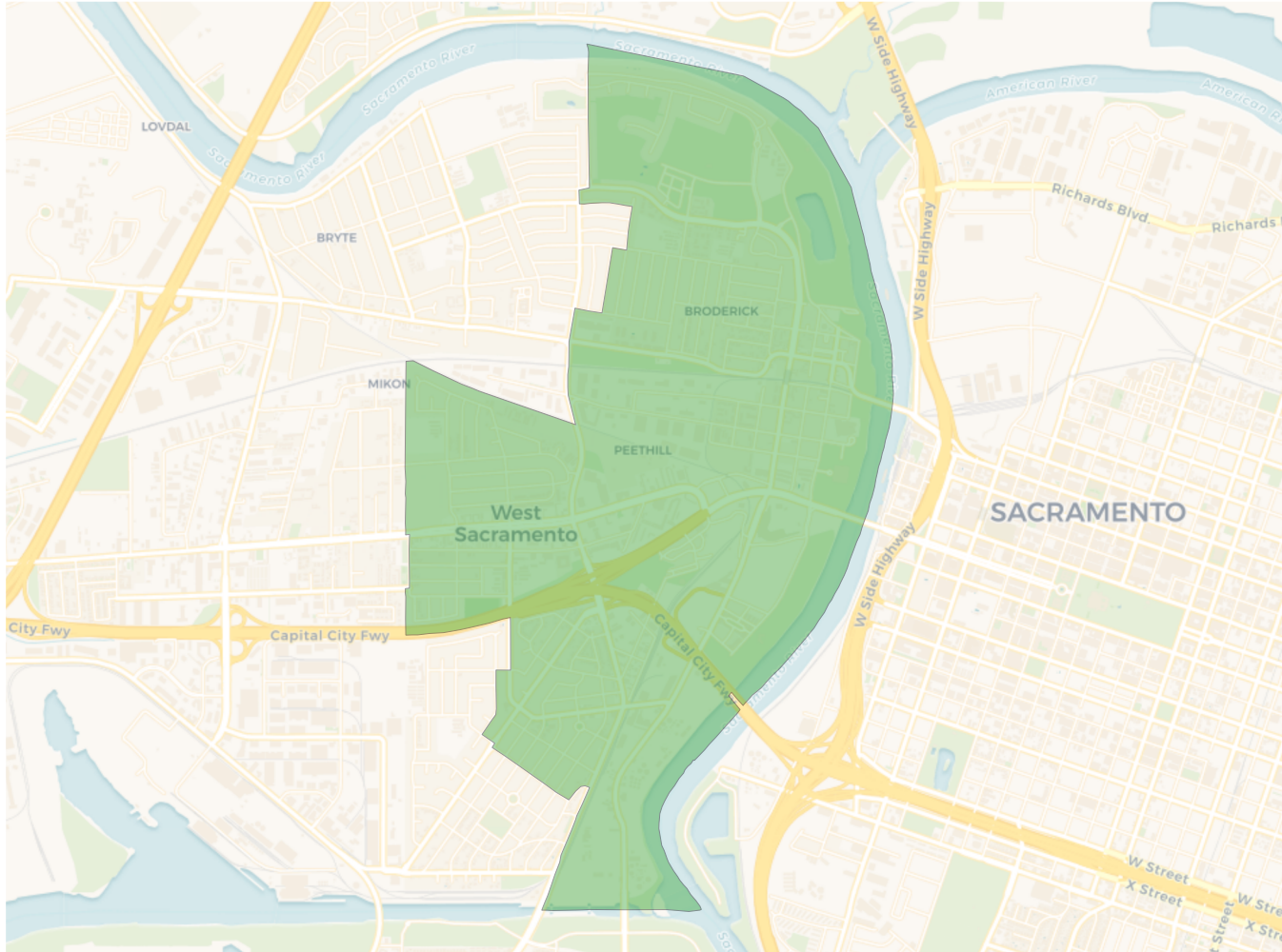


Citizen Voting Age Population

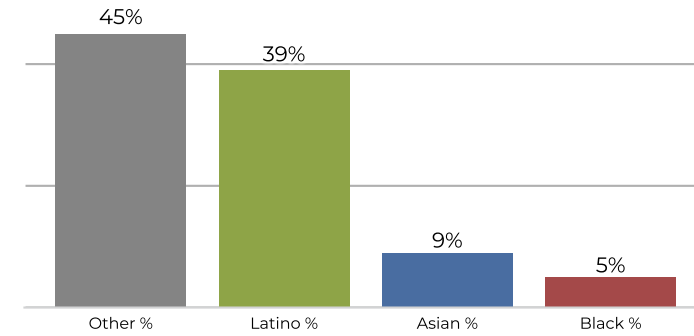


Population	Deviation	Deviation %	Other	Other %	Latino	Latino %	Asian	Asian %	Black	Black %
13,505	-14	-0.1%	5,816	43.1%	5,960	44.1%	1,188	8.8%	541	4.0%
Total CVAP	Other CVAP	Other CVAP %	Latino CVAP	Latino CVAP %	Asian CVAP	Asian CVAP %	Black CVAP	Black CVAP %		
7,230	3,929	54.3%	2,108	29.2%	573	7.9%	620	8.6%		

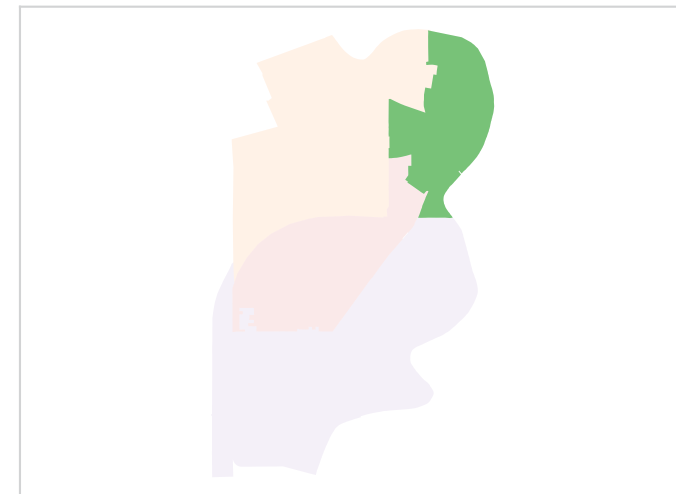
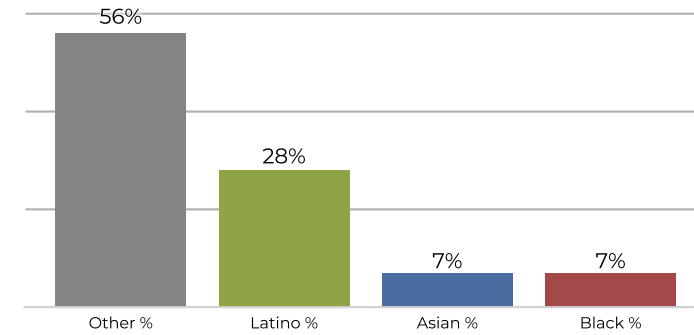
District 2



2020 Census

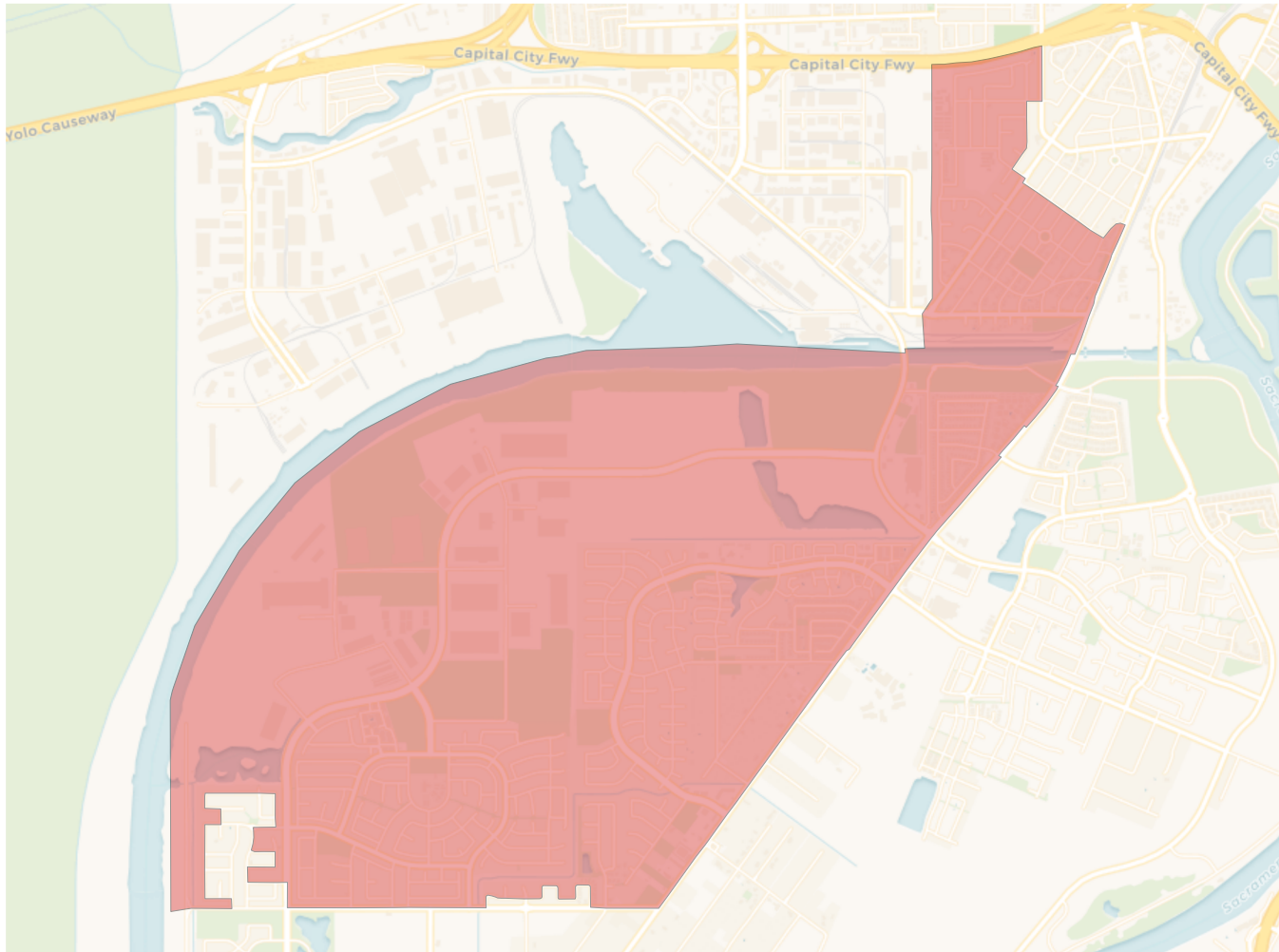


Citizen Voting Age Population

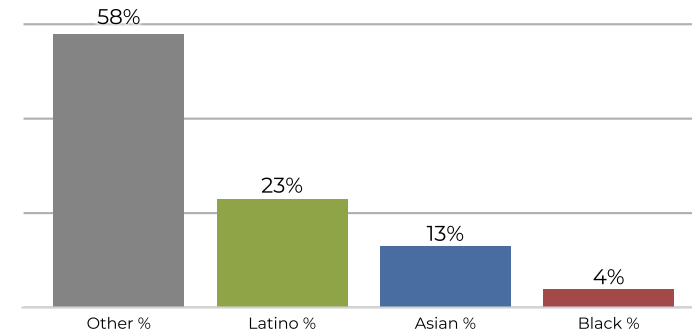


Population	Deviation	Deviation %	Other	Other %	Latino	Latino %	Asian	Asian %	Black	Black %
13,538	19	0.1%	6,157	45.5%	5,323	39.3%	1,289	9.5%	769	5.7%
Total CVAP	Other CVAP	Other CVAP %	Latino CVAP	Latino CVAP %	Asian CVAP	Asian CVAP %	Black CVAP	Black CVAP %		
7,928	4,513	56.9%	2,236	28.2%	581	7.3%	598	7.5%		

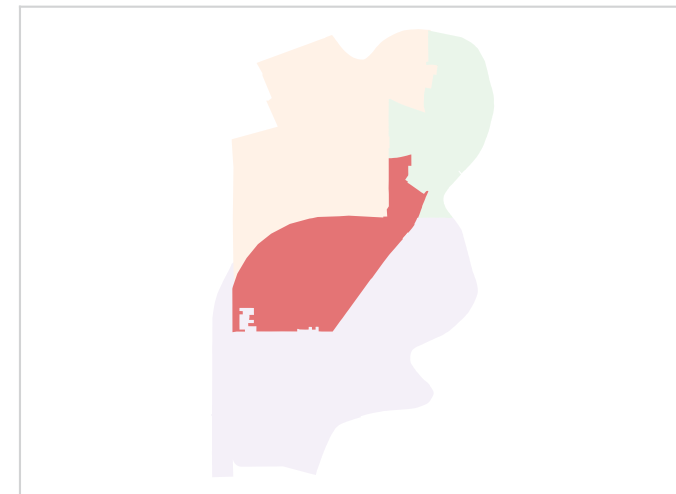
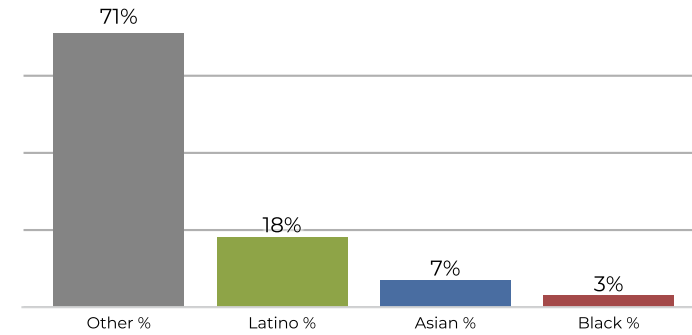
District 3



2020 Census

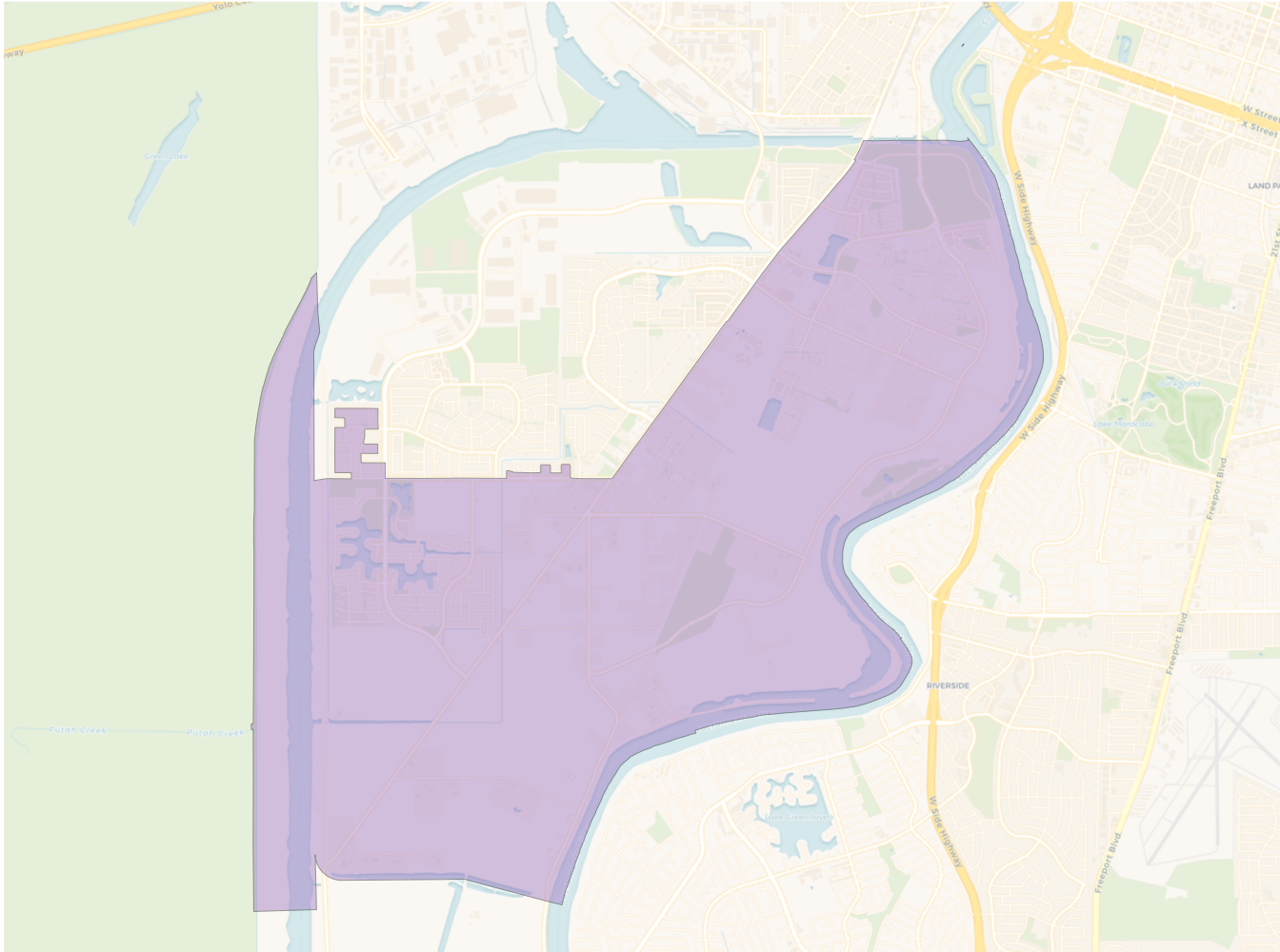


Citizen Voting Age Population

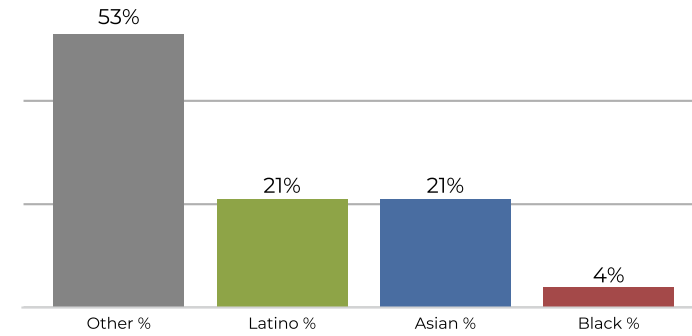


Population	Deviation	Deviation %	Other	Other %	Latino	Latino %	Asian	Asian %	Black	Black %
13,505	-14	-0.1%	7,899	58.5%	3,204	23.7%	1,826	13.5%	576	4.3%
Total CVAP	Other CVAP	Other CVAP %	Latino CVAP	Latino CVAP %	Asian CVAP	Asian CVAP %	Black CVAP	Black CVAP %		
9,607	6,819	71.0%	1,734	18.0%	685	7.1%	369	3.8%		

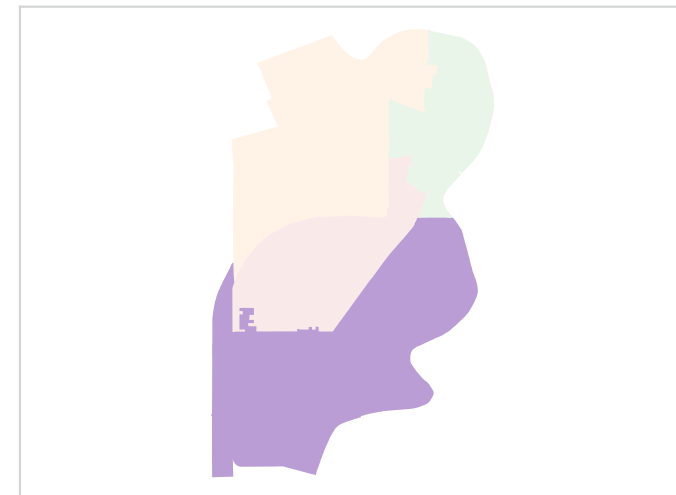
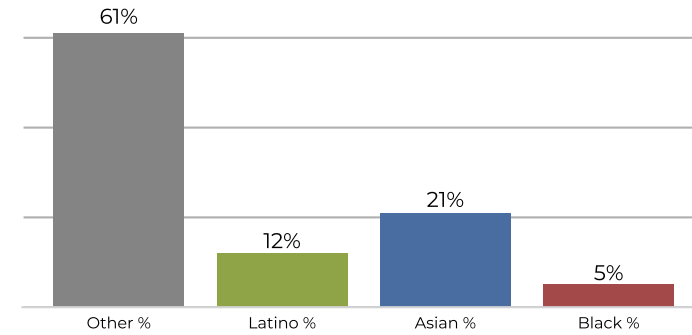
District 4



2020 Census



Citizen Voting Age Population



Population	Deviation	Deviation %	Other	Other %	Latino	Latino %	Asian	Asian %	Black	Black %
13,529	10	0.1%	7,214	53.3%	2,837	21.0%	2,841	21.0%	637	4.7%
Total CVAP	Other CVAP	Other CVAP %	Latino CVAP	Latino CVAP %	Asian CVAP	Asian CVAP %	Black CVAP	Black CVAP %		
8,779	5,388	61.4%	1,067	12.2%	1,841	21.0%	483	5.5%		