

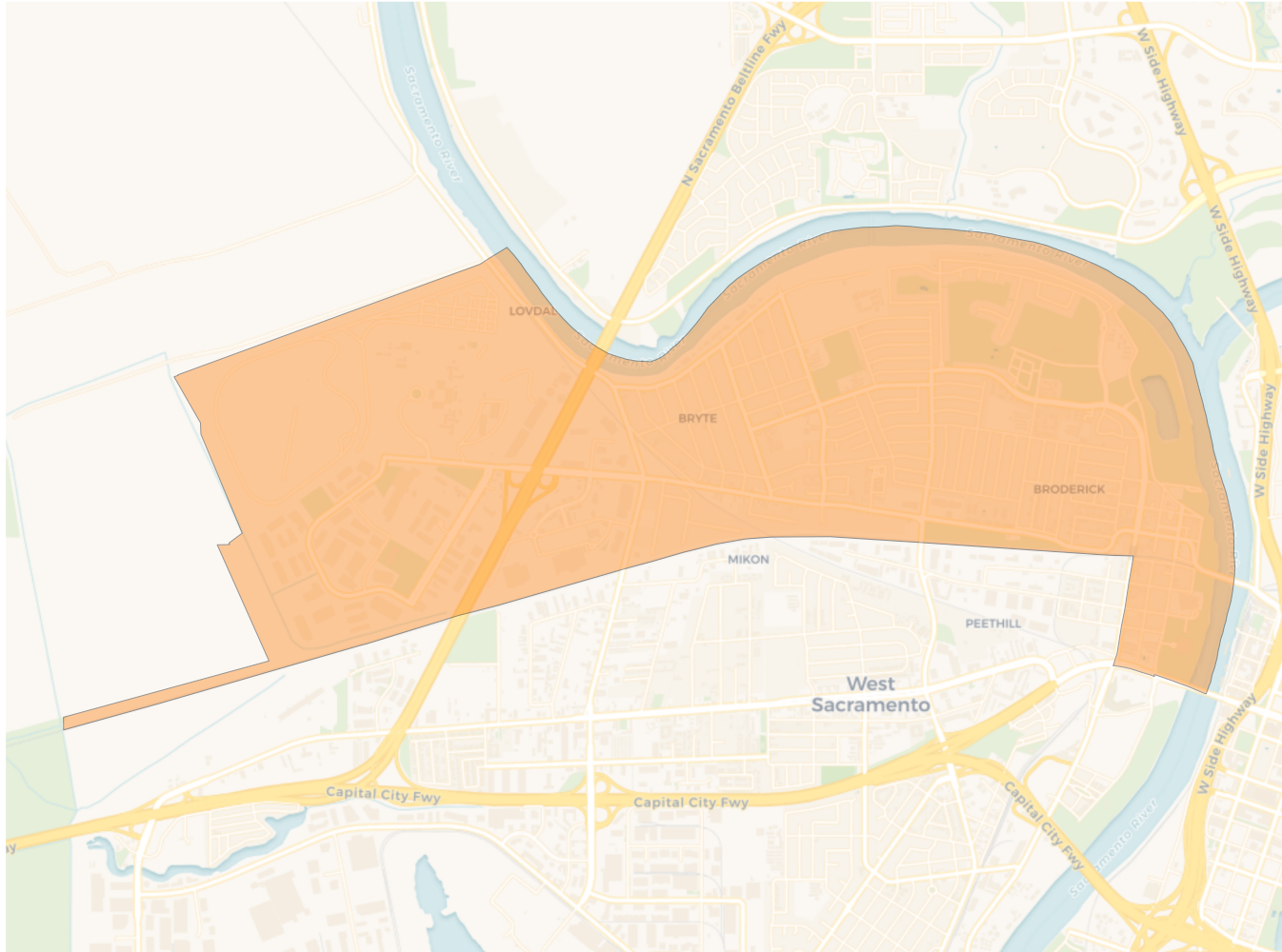
2020 Census

	A	B	C	D
Population	13,393	13,672	13,967	13,045
Deviation	-126	153	448	-474
Deviation %	-0.9%	1.1%	3.3%	-3.5%
Other	6,047	6,051	7,648	7,340
Other %	45.2%	44.3%	54.8%	56.3%
Latino	5,702	5,513	3,008	3,101
Latino %	42.6%	40.3%	21.5%	23.8%
Asian	1,102	1,347	2,714	1,981
Asian %	8.2%	9.9%	19.4%	15.2%
Black	542	761	597	623
Black %	4.0%	5.6%	4.3%	4.8%

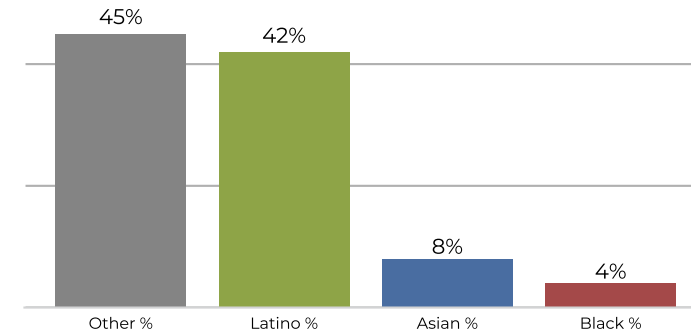
Citizen Voting Age Population (CVAP)

	A	B	C	D
Total CVAP	8,072	7,463	9,341	8,668
Other CVAP	4,455	4,362	5,777	6,055
Other CVAP %	55.2%	58.4%	61.8%	69.9%
Latino CVAP	2,354	1,969	1,347	1,475
Latino CVAP %	29.2%	26.4%	14.4%	17.0%
Asian CVAP	590	582	1,781	727
Asian CVAP %	7.3%	7.8%	19.1%	8.4%
Black CVAP	673	550	436	411
Black CVAP %	8.3%	7.4%	4.7%	4.7%

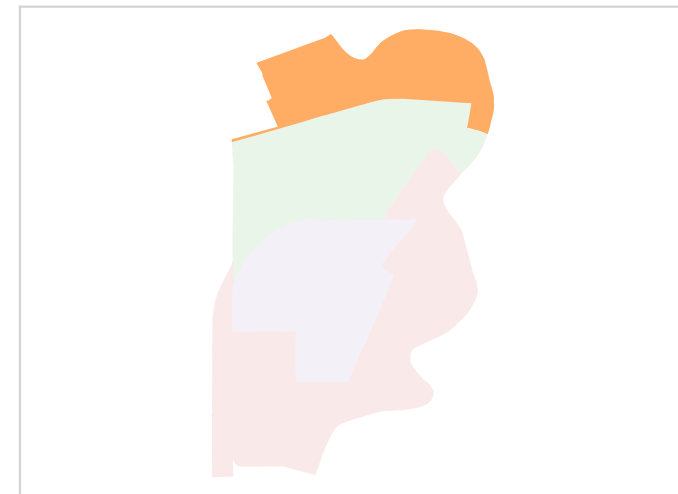
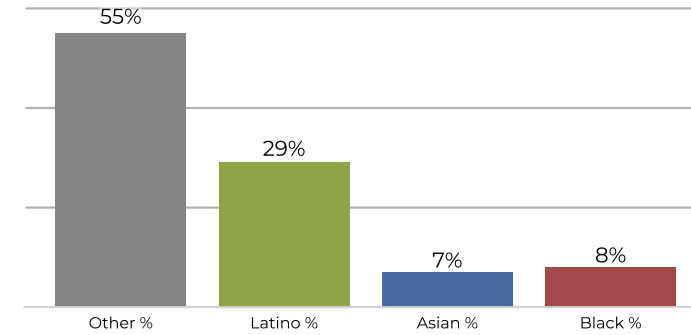
District A



2020 Census

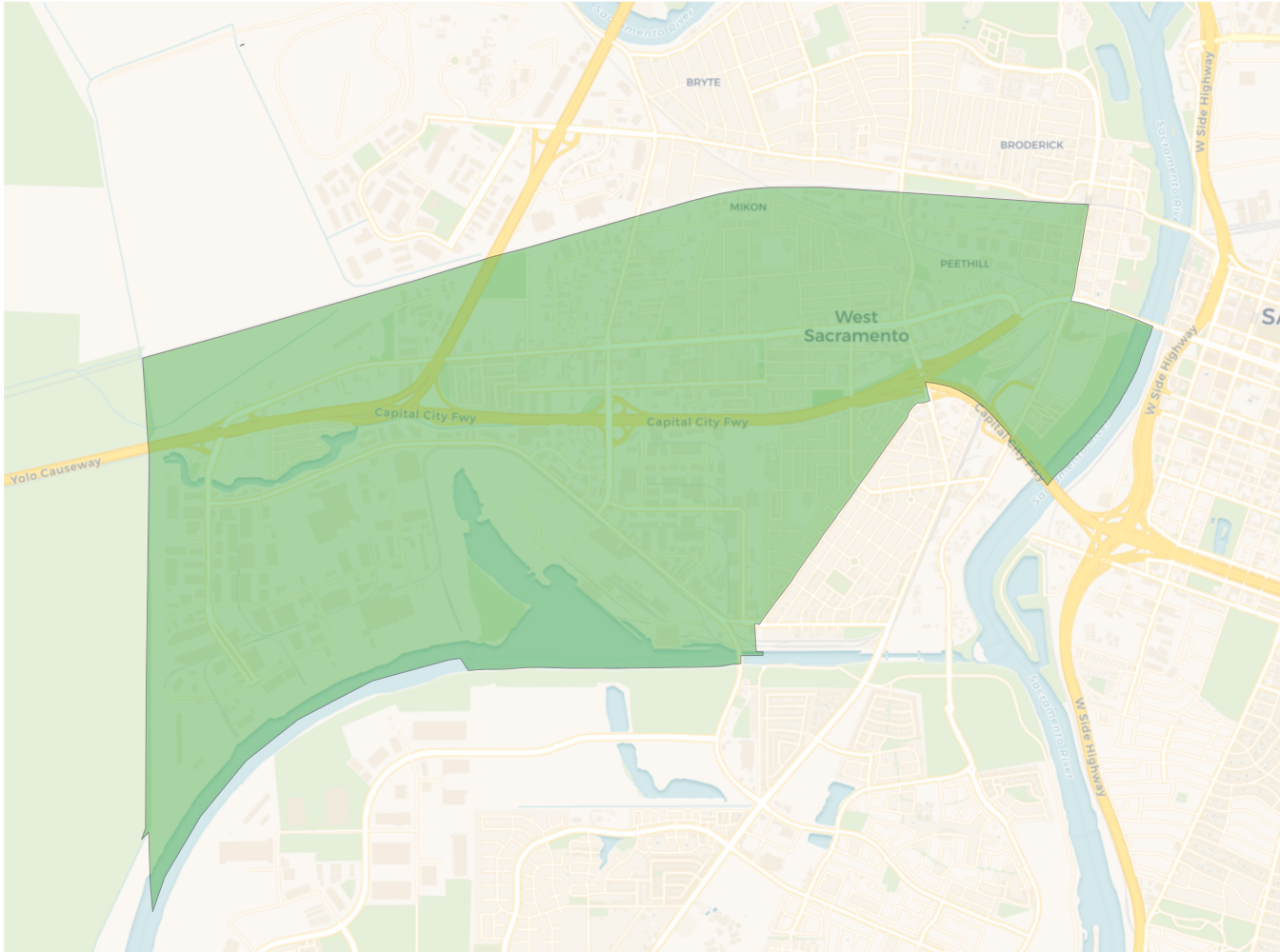


Citizen Voting Age Population

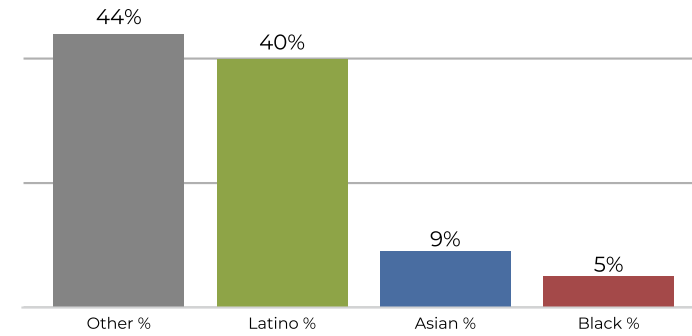


Population	Deviation	Deviation %	Other	Other %	Latino	Latino %	Asian	Asian %	Black	Black %
13,393	-126	-0.9%	6,047	45.2%	5,702	42.6%	1,102	8.2%	542	4.0%
Total CVAP	Other CVAP	Other CVAP %	Latino CVAP	Latino CVAP %	Asian CVAP	Asian CVAP %	Black CVAP	Black CVAP %		
8,072	4,455	55.2%	2,354	29.2%	590	7.3%	673	8.3%		

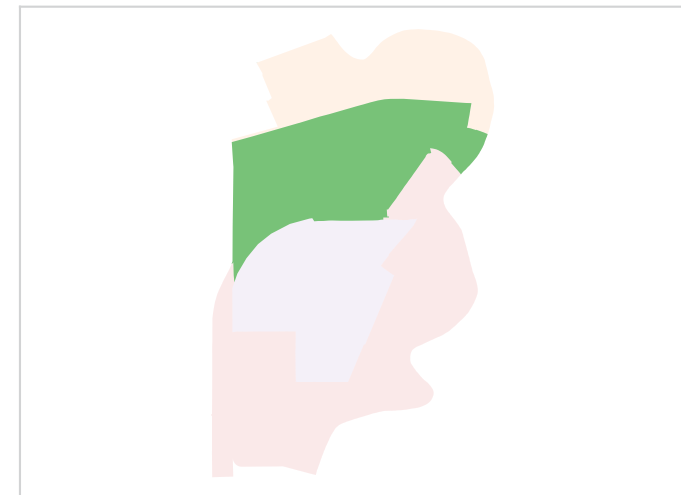
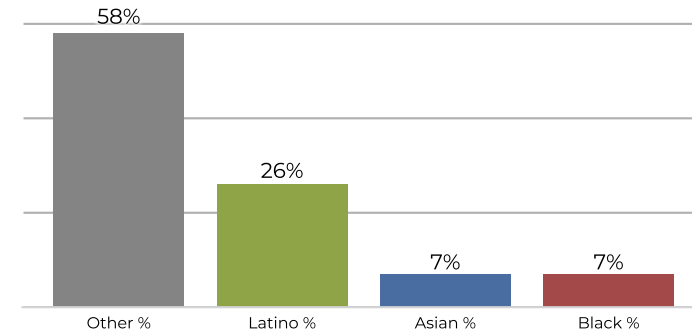
District B



2020 Census

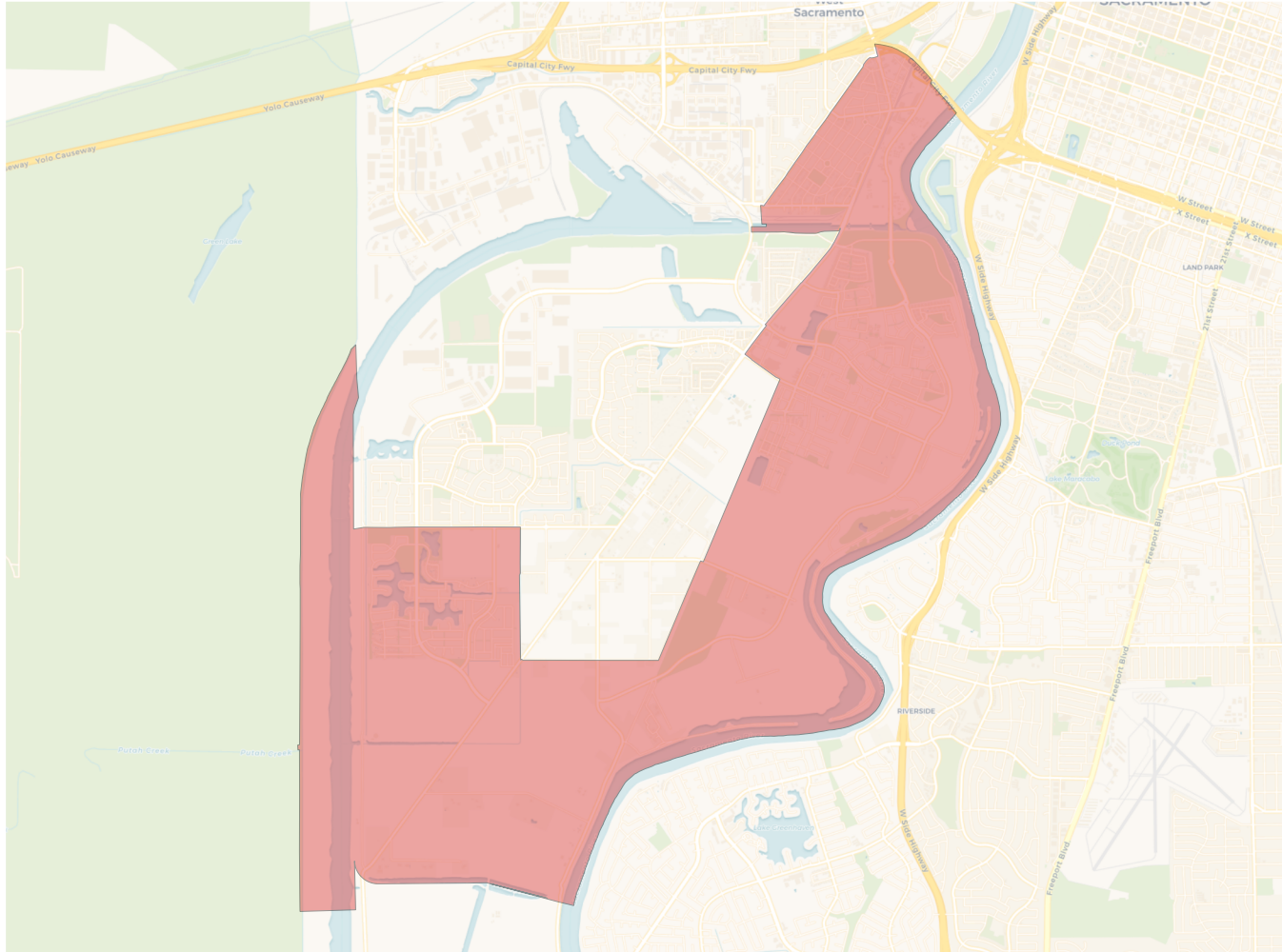


Citizen Voting Age Population

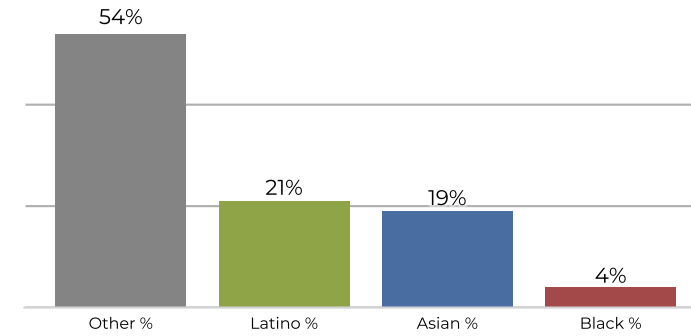


Population	Deviation	Deviation %	Other	Other %	Latino	Latino %	Asian	Asian %	Black	Black %
13,672	153	1.1%	6,051	44.3%	5,513	40.3%	1,347	9.9%	761	5.6%
Total CVAP	Other CVAP	Other CVAP %	Latino CVAP	Latino CVAP %	Asian CVAP	Asian CVAP %	Black CVAP	Black CVAP %		
7,463	4,362	58.4%	1,969	26.4%	582	7.8%	550	7.4%		

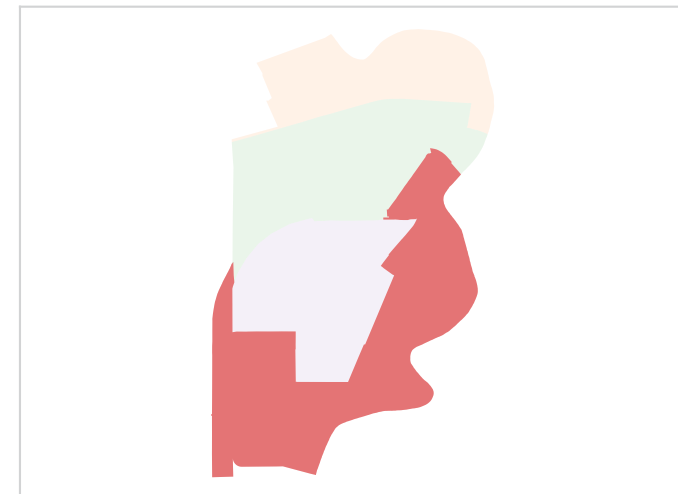
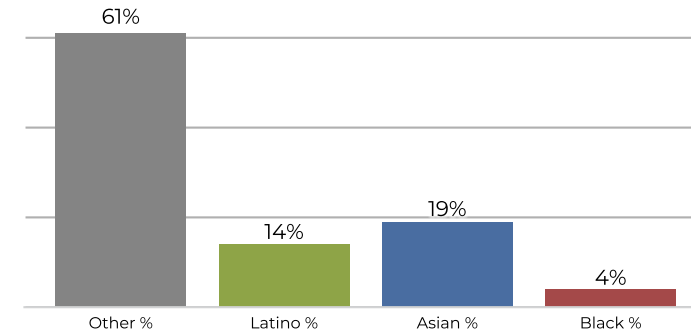
District C



2020 Census

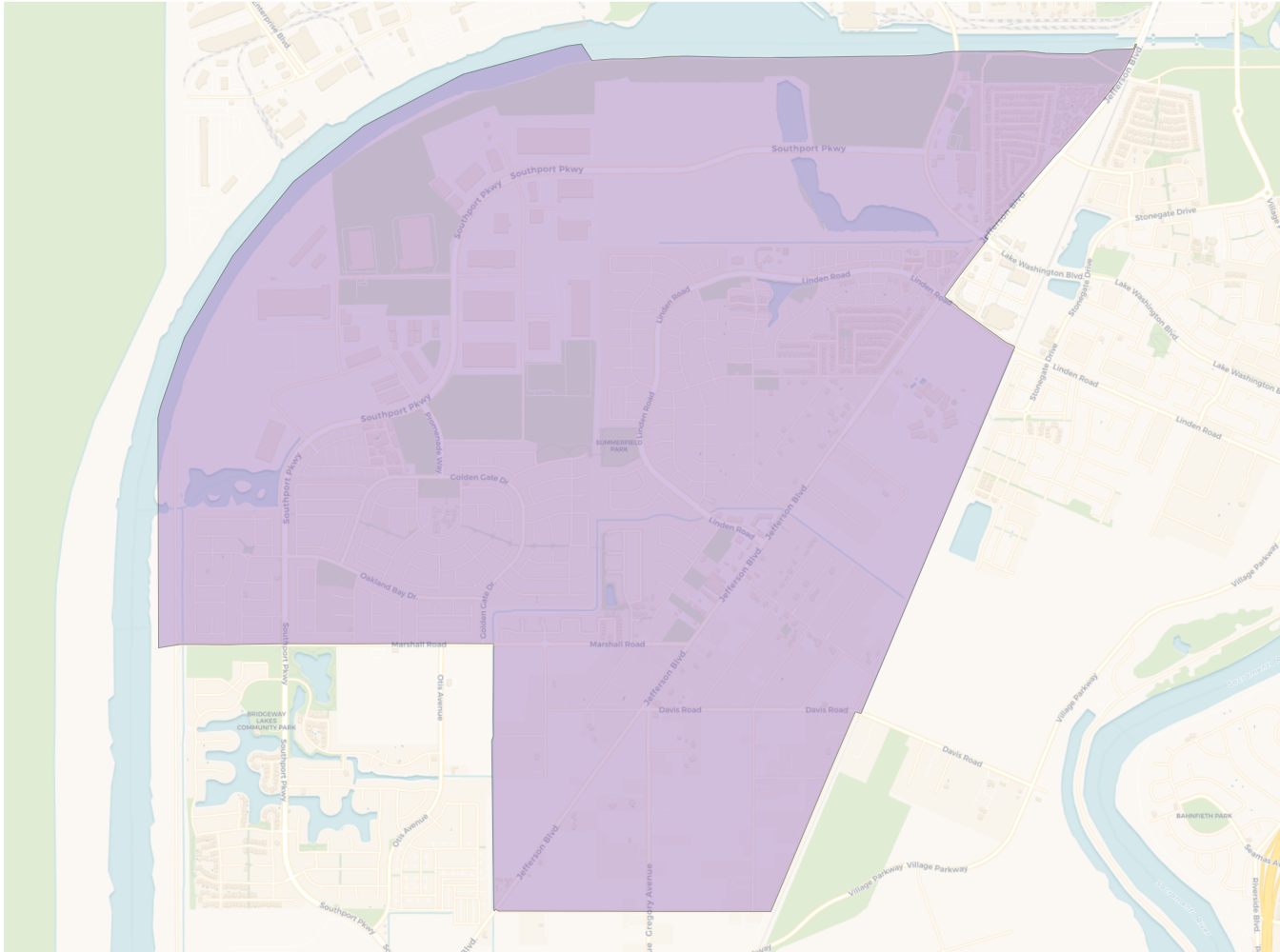


Citizen Voting Age Population

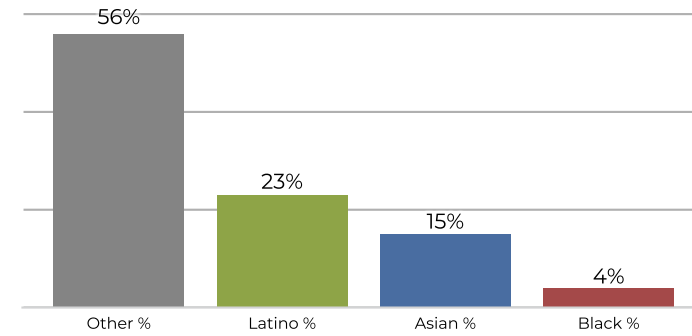


Population	Deviation	Deviation %	Other	Other %	Latino	Latino %	Asian	Asian %	Black	Black %
13,967	448	3.3%	7,648	54.8%	3,008	21.5%	2,714	19.4%	597	4.3%
Total CVAP	Other CVAP	Other CVAP %	Latino CVAP	Latino CVAP %	Asian CVAP	Asian CVAP %	Black CVAP	Black CVAP %		
9,341	5,777	61.8%	1,347	14.4%	1,781	19.1%	436	4.7%		

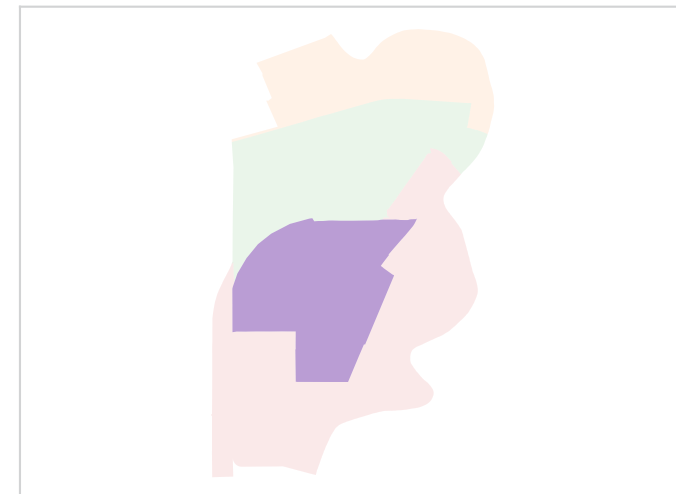
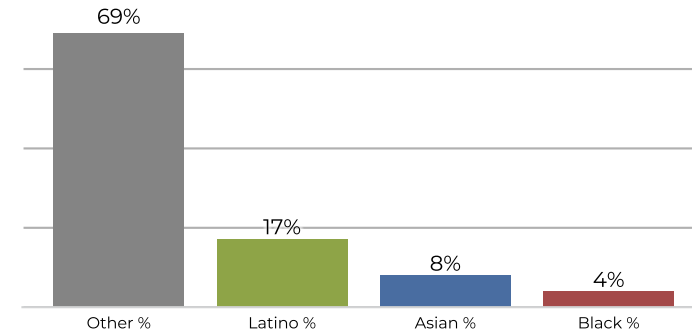
District D



2020 Census



Citizen Voting Age Population



Population	Deviation	Deviation %	Other	Other %	Latino	Latino %	Asian	Asian %	Black	Black %
13,045	-474	-3.5%	7,340	56.3%	3,101	23.8%	1,981	15.2%	623	4.8%
Total CVAP	Other CVAP	Other CVAP %	Latino CVAP	Latino CVAP %	Asian CVAP	Asian CVAP %	Black CVAP	Black CVAP %		
8,668	6,055	69.9%	1,475	17.0%	727	8.4%	411	4.7%		