

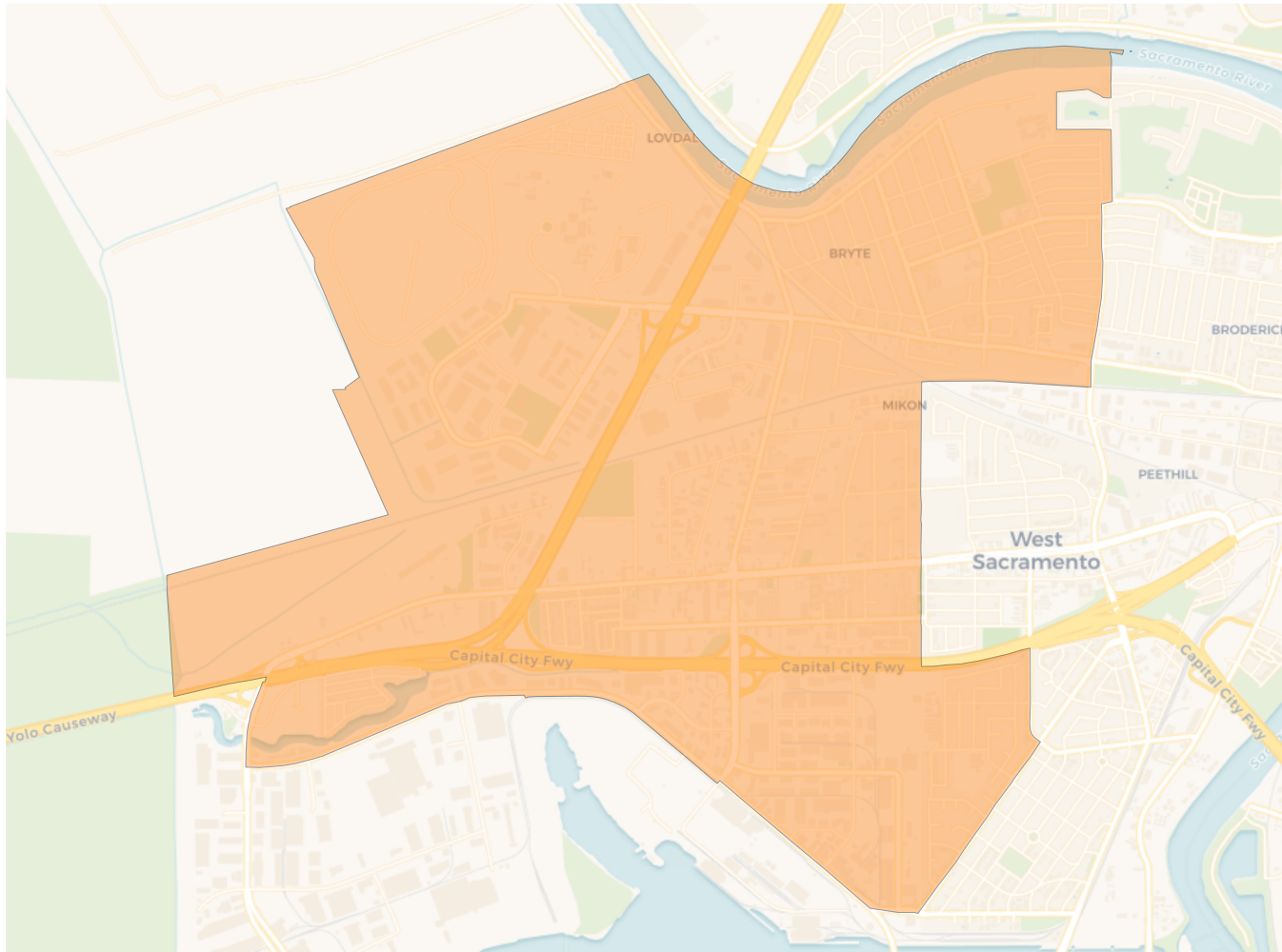
**2020 Census**

	1	2	3	4
Population	13,963	13,865	13,137	13,112
Deviation	444	346	-382	-407
Deviation %	3.3%	2.6%	-2.8%	-3.0%
Other	6,391	6,193	7,055	7,447
Other %	45.8%	44.7%	53.7%	56.8%
Latino	5,923	5,518	2,924	2,959
Latino %	42.4%	39.8%	22.3%	22.6%
Asian	1,124	1,361	2,407	2,252
Asian %	8.0%	9.8%	18.3%	17.2%
Black	525	793	751	454
Black %	3.8%	5.7%	5.7%	3.5%

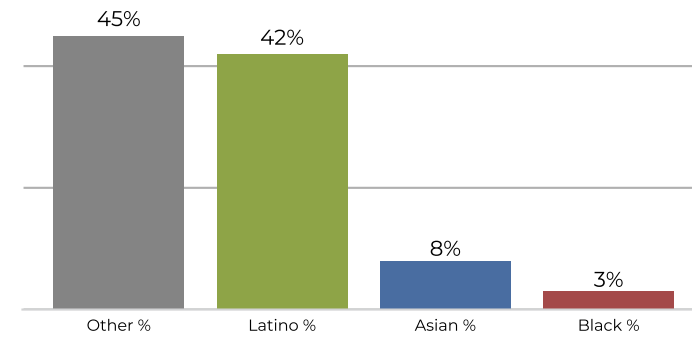
**Citizen Voting Age Population (CVAP)**

	1	2	3	4
Total CVAP	7,952	8,060	8,683	8,849
Other CVAP	4,560	4,585	5,514	5,990
Other CVAP %	57.3%	56.9%	63.5%	67.7%
Latino CVAP	2,206	2,253	1,414	1,272
Latino CVAP %	27.7%	28.0%	16.3%	14.4%
Asian CVAP	603	578	1,136	1,363
Asian CVAP %	7.6%	7.2%	13.1%	15.4%
Black CVAP	583	644	619	224
Black CVAP %	7.3%	8.0%	7.1%	2.5%

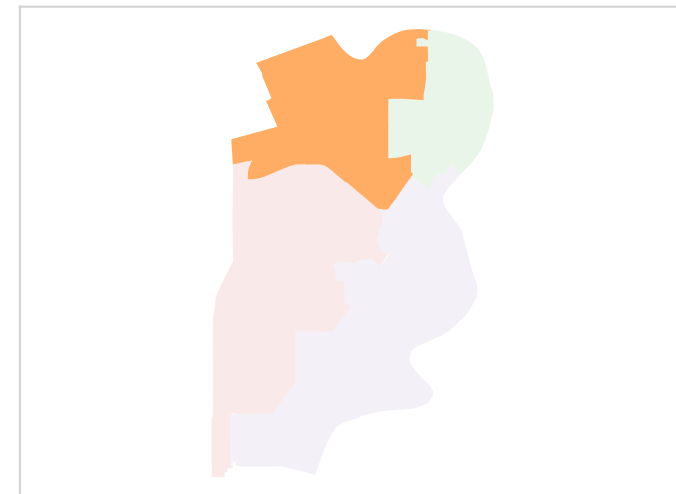
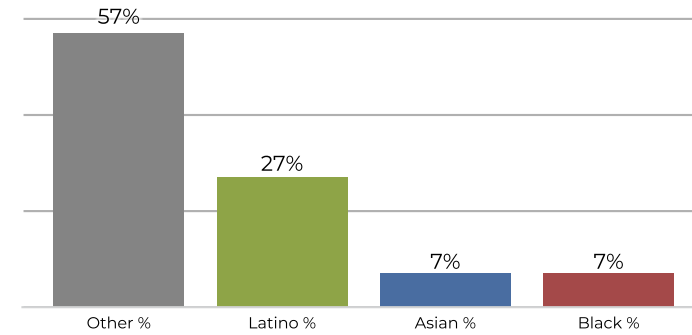
**District 1**



**2020 Census**



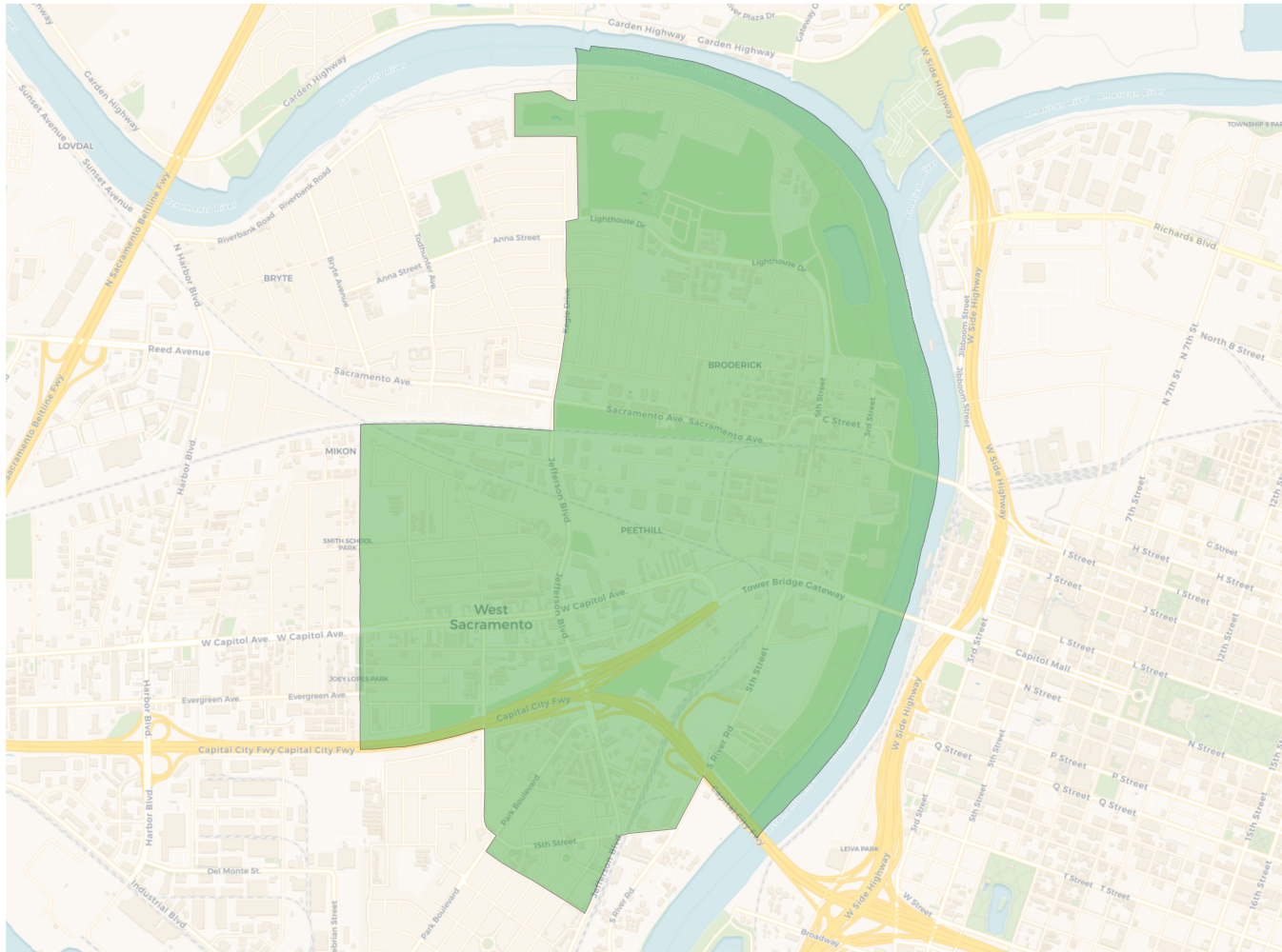
**Citizen Voting Age Population**



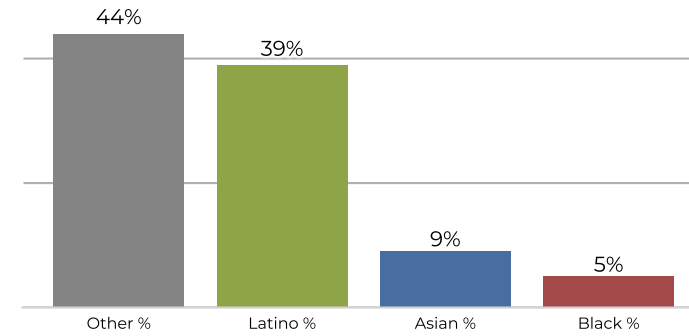
Population	Deviation	Deviation %	Other	Other %	Latino	Latino %	Asian	Asian %	Black	Black %
13,963	444	3.3%	6,391	45.8%	5,923	42.4%	1,124	8.0%	525	3.8%
Total CVAP	Other CVAP	Other CVAP %	Latino CVAP	Latino CVAP %	Asian CVAP	Asian CVAP %	Black CVAP	Black CVAP %		
7,952	4,560	57.3%	2,206	27.7%	603	7.6%	583	7.3%		



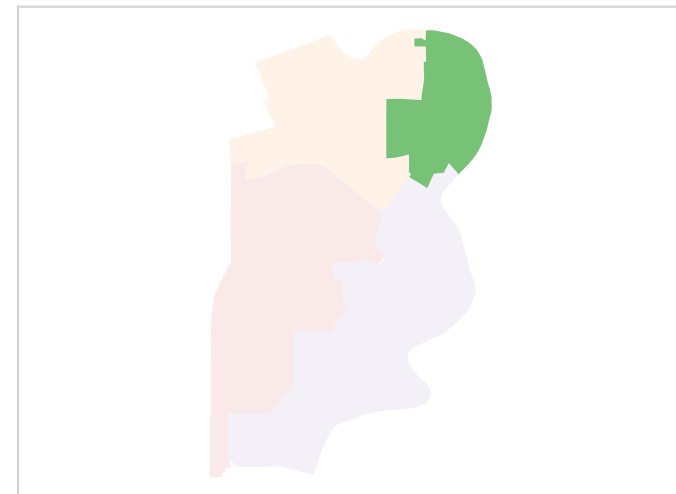
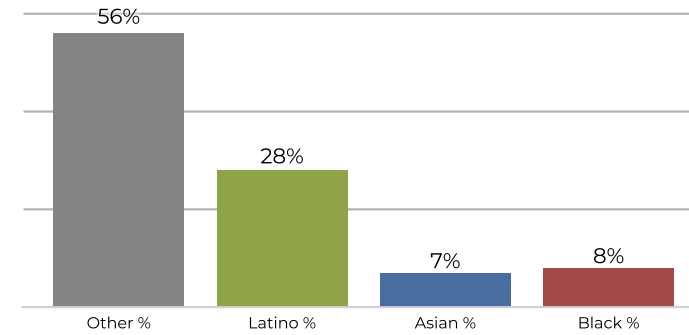
**District 2**



**2020 Census**



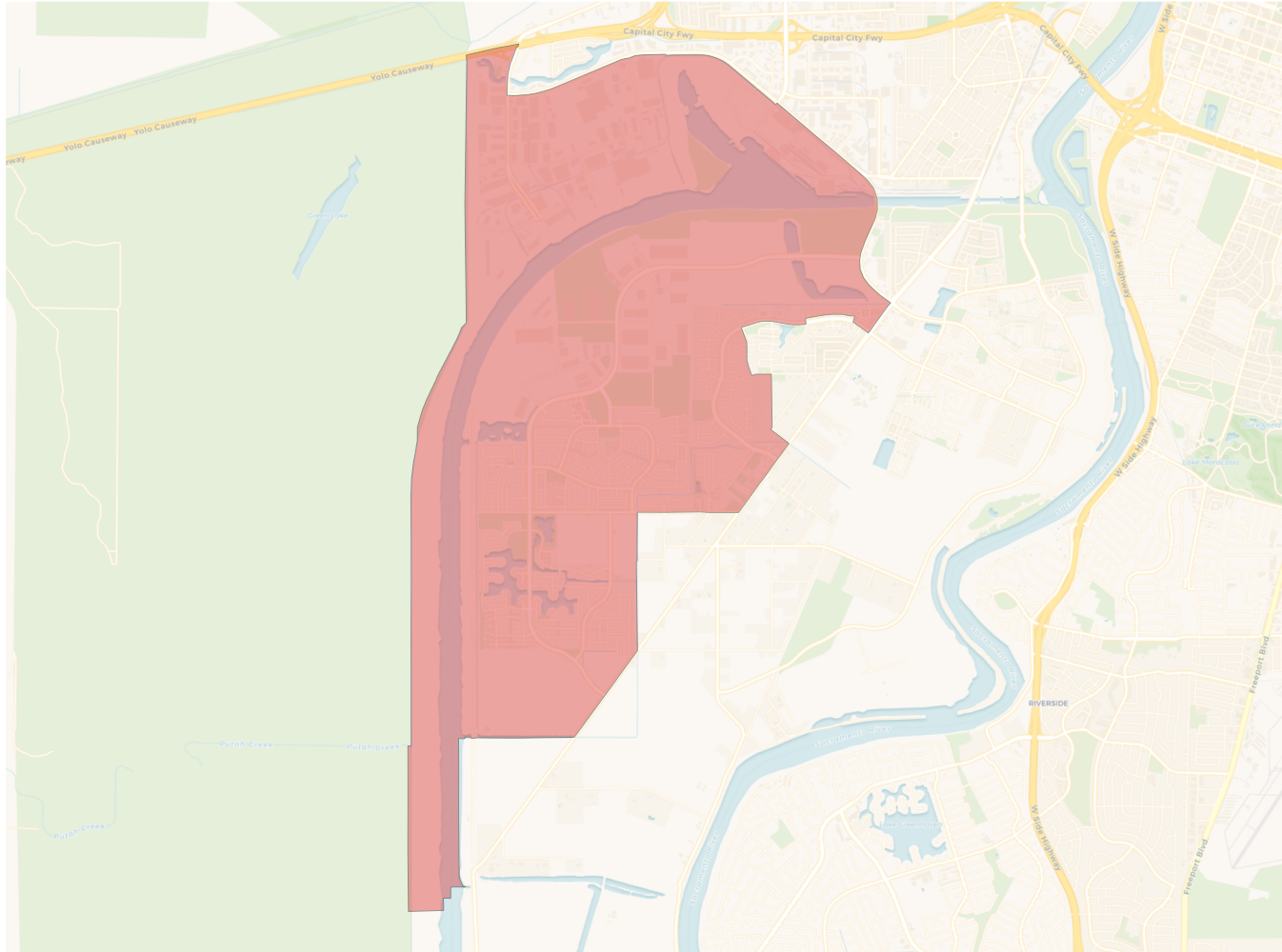
**Citizen Voting Age Population**



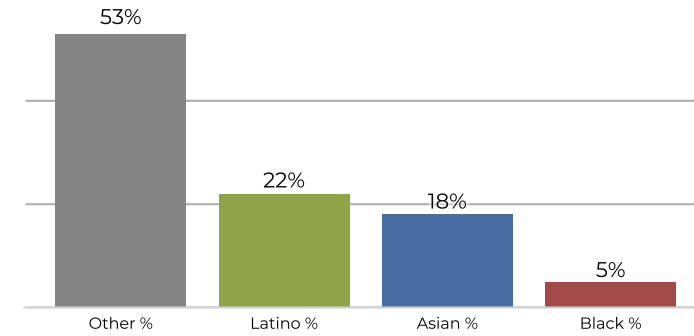
Population	Deviation	Deviation %	Other	Other %	Latino	Latino %	Asian	Asian %	Black	Black %
13,865	346	2.6%	6,193	44.7%	5,518	39.8%	1,361	9.8%	793	5.7%
Total CVAP	Other CVAP	Other CVAP %	Latino CVAP	Latino CVAP %	Asian CVAP	Asian CVAP %	Black CVAP	Black CVAP %		
8,060	4,585	56.9%	2,253	28.0%	578	7.2%	644	8.0%		



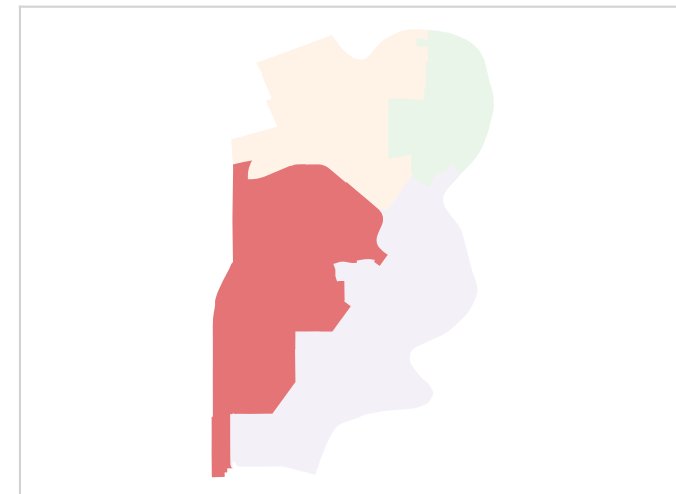
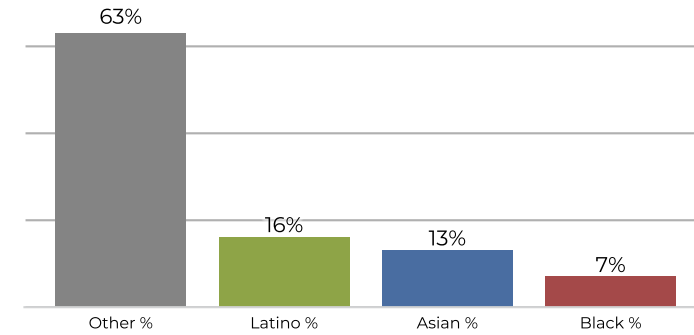
**District 3**



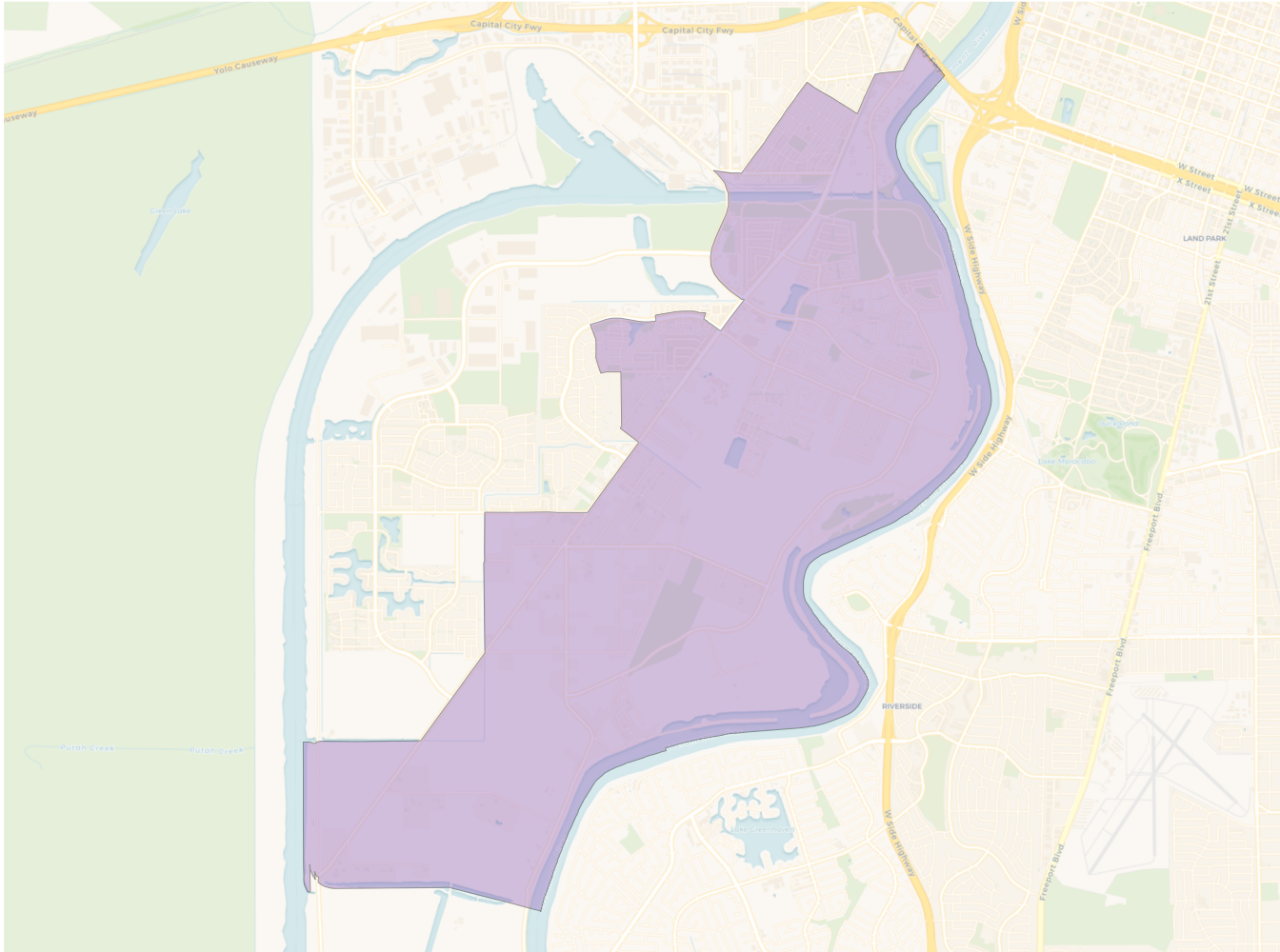
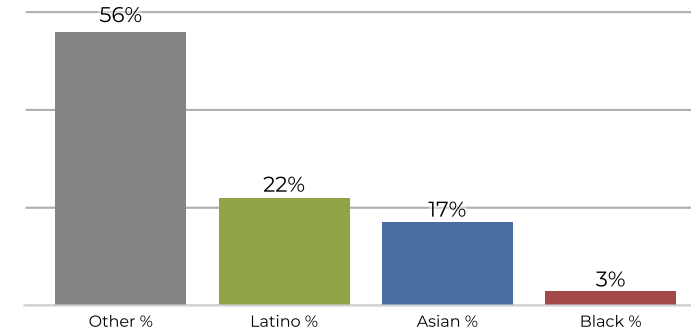
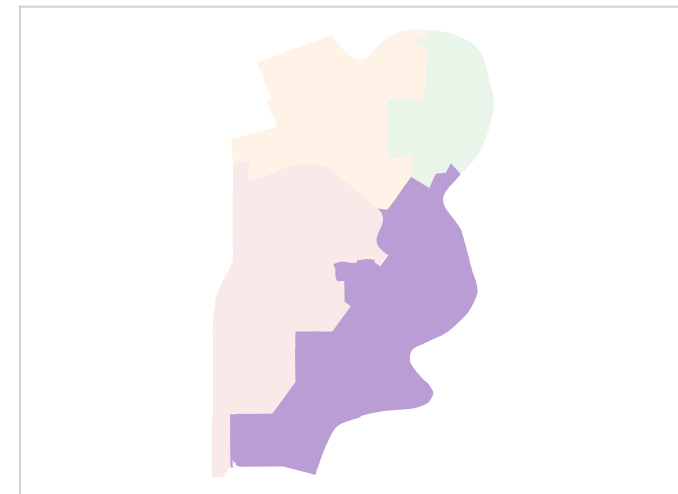
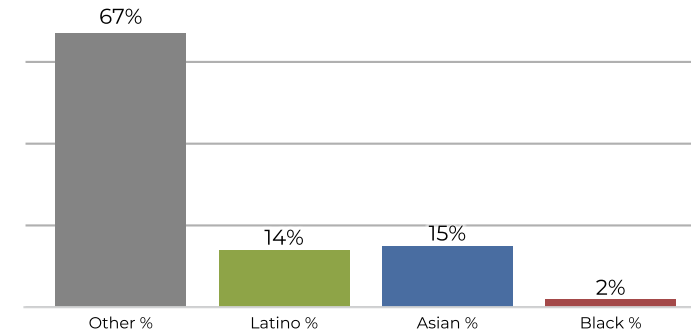
**2020 Census**



**Citizen Voting Age Population**



Population	Deviation	Deviation %	Other	Other %	Latino	Latino %	Asian	Asian %	Black	Black %
13,137	-382	-2.8%	7,055	53.7%	2,924	22.3%	2,407	18.3%	751	5.7%
Total CVAP	Other CVAP	Other CVAP %	Latino CVAP	Latino CVAP %	Asian CVAP	Asian CVAP %	Black CVAP	Black CVAP %		
8,683	5,514	63.5%	1,414	16.3%	1,136	13.1%	619	7.1%		

**District 4**

**2020 Census**

**Citizen Voting Age Population**


Population	Deviation	Deviation %	Other	Other %	Latino	Latino %	Asian	Asian %	Black	Black %
13,112	-407	-3.0%	7,447	56.8%	2,959	22.6%	2,252	17.2%	454	3.5%
Total CVAP	Other CVAP	Other CVAP %	Latino CVAP	Latino CVAP %	Asian CVAP	Asian CVAP %	Black CVAP	Black CVAP %		
8,849	5,990	67.7%	1,272	14.4%	1,363	15.4%	224	2.5%		