

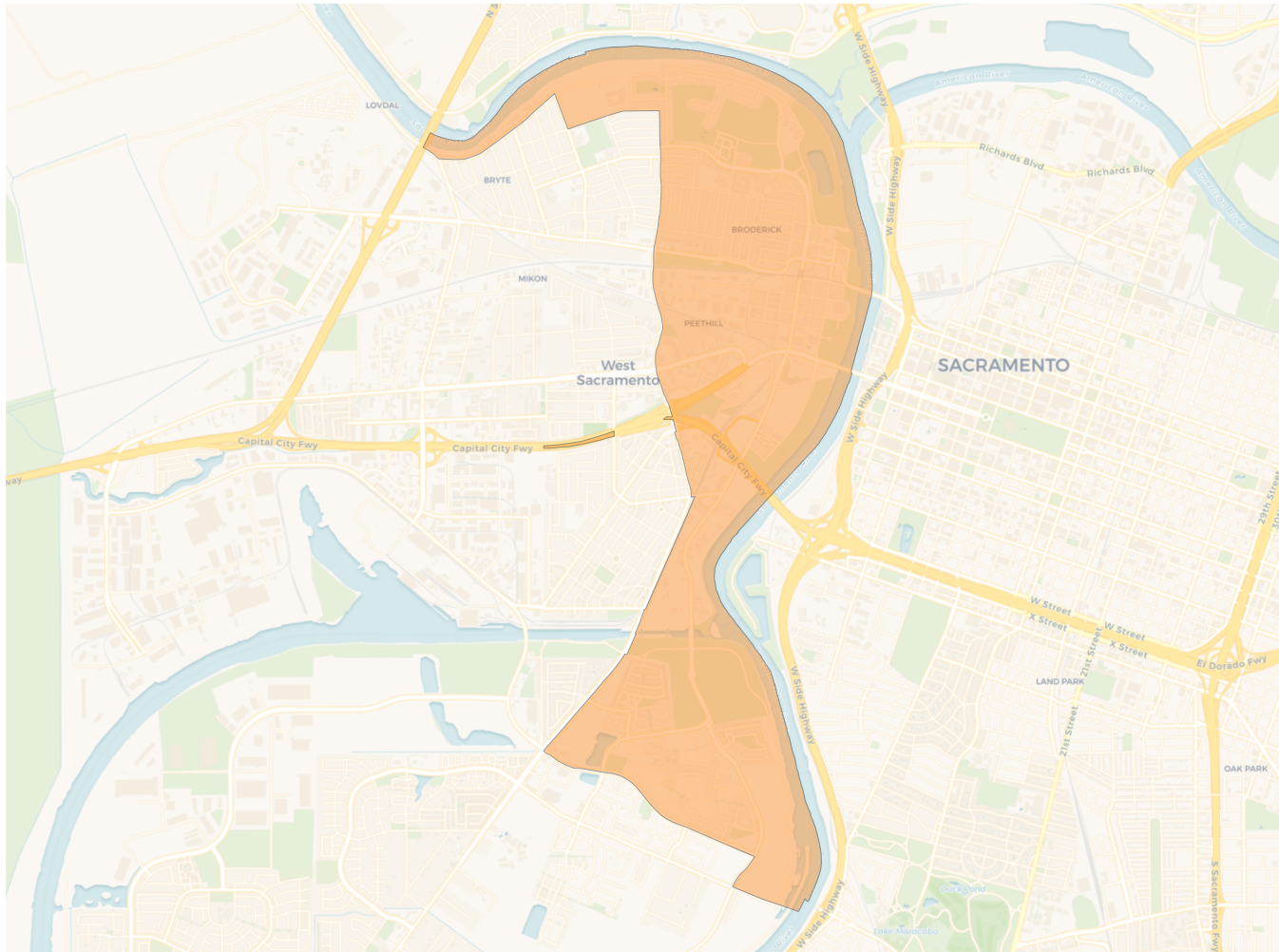
2020 Census

	1	2	3	4
Population	13,089	13,795	13,285	13,902
Deviation	-429	277	-233	384
Deviation %	-3.2%	2.0%	-1.7%	2.8%
Other	6,280	5,847	7,224	7,731
Other %	48.0%	42.4%	54.4%	55.6%
Latino	4,175	6,526	3,626	2,995
Latino %	31.9%	47.3%	27.3%	21.5%
Asian	1,893	927	1,757	2,567
Asian %	14.5%	6.7%	13.2%	18.5%
Black	741	495	678	609
Black %	5.7%	3.6%	5.1%	4.4%

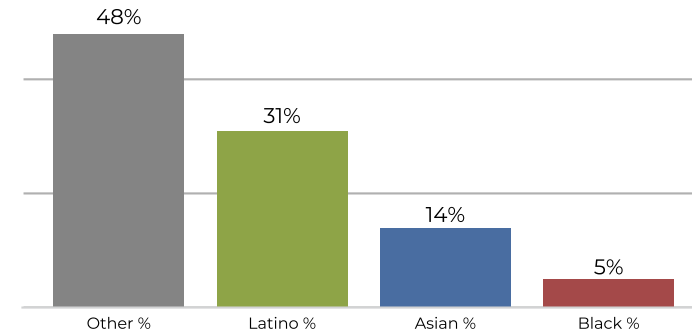
Citizen Voting Age Population (CVAP)

	1	2	3	4
Total CVAP	8,187	7,373	8,457	9,522
Other CVAP	4,610	3,909	5,685	6,441
Other CVAP %	56.3%	53.0%	67.2%	67.6%
Latino CVAP	1,784	2,283	1,709	1,368
Latino CVAP %	21.8%	31.0%	20.2%	14.4%
Asian CVAP	1,195	666	556	1,263
Asian CVAP %	14.6%	9.0%	6.6%	13.3%
Black CVAP	598	515	507	450
Black CVAP %	7.3%	7.0%	6.0%	4.7%

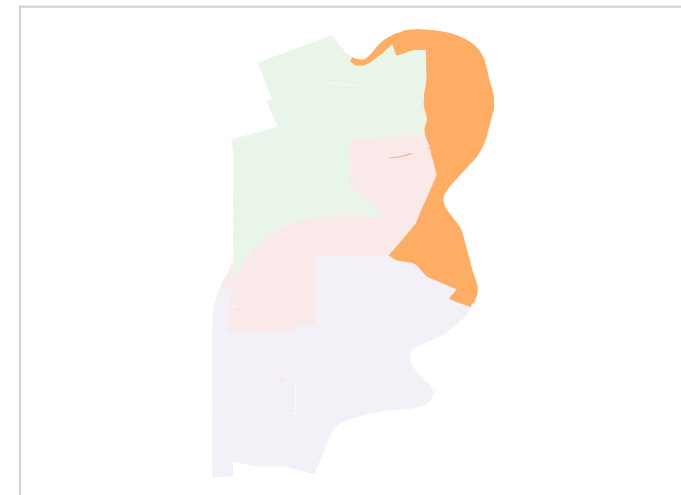
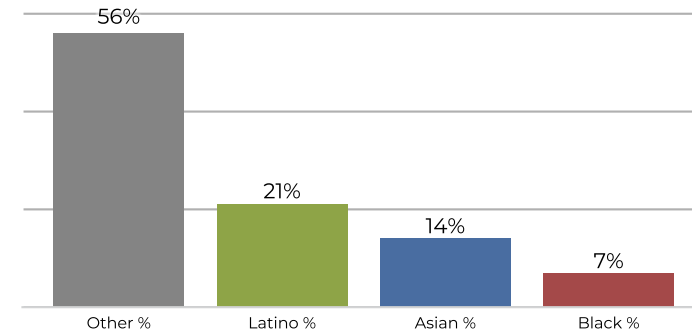
District 1



2020 Census

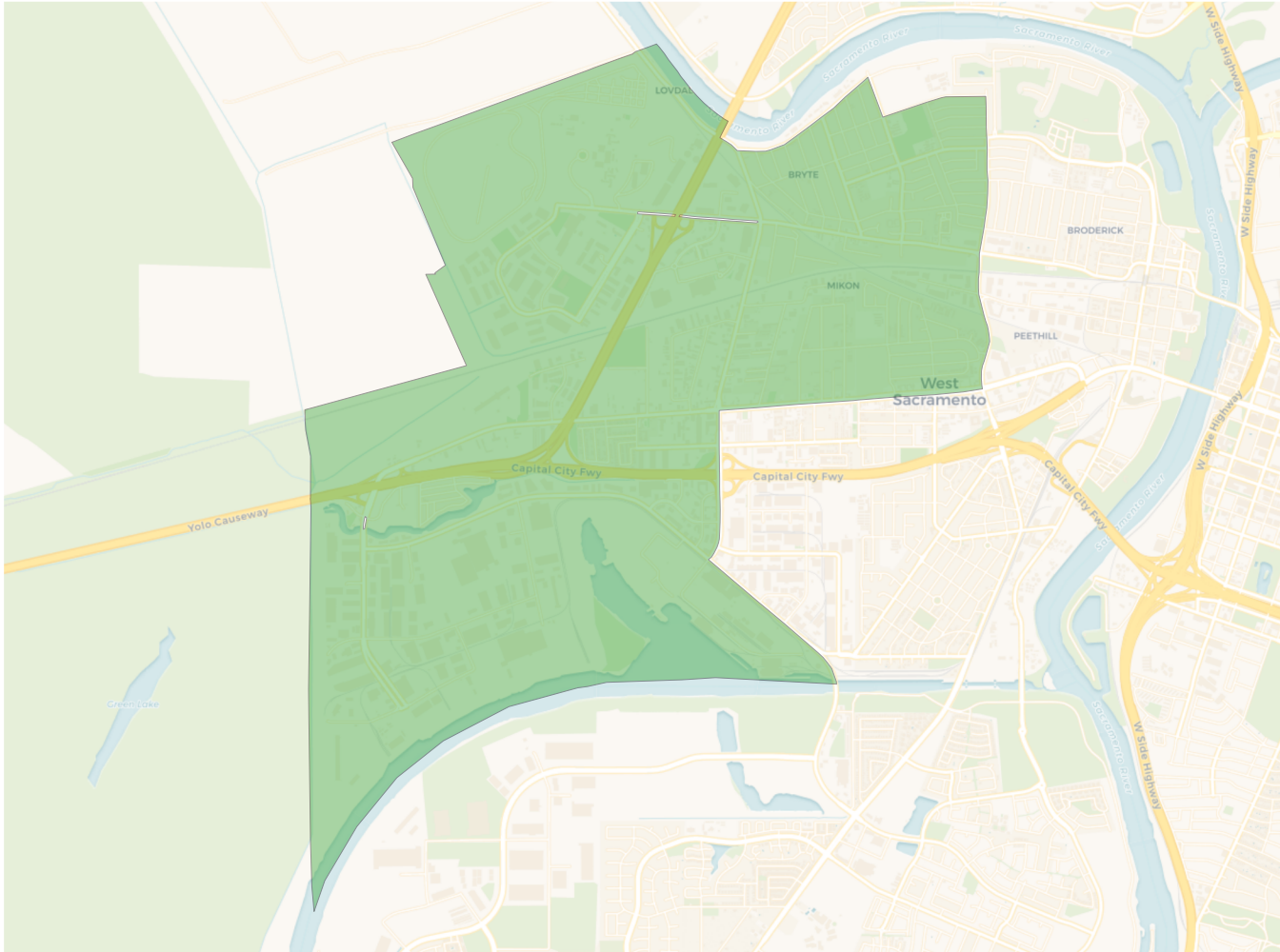


Citizen Voting Age Population

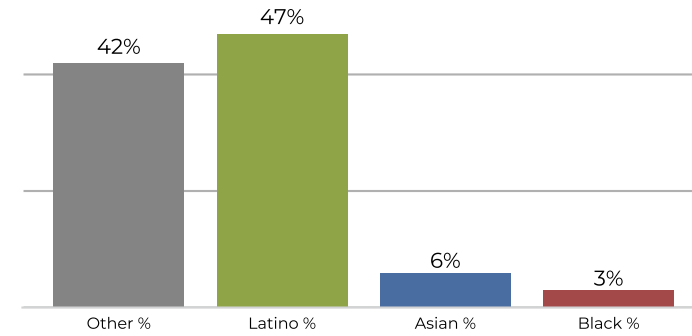


Population	Deviation	Deviation %	Other	Other %	Latino	Latino %	Asian	Asian %	Black	Black %
13,089	-429	-3.2%	6,280	48.0%	4,175	31.9%	1,893	14.5%	741	5.7%
Total CVAP	Other CVAP	Other CVAP %	Latino CVAP	Latino CVAP %	Asian CVAP	Asian CVAP %	Black CVAP	Black CVAP %		
8,187	4,610	56.3%	1,784	21.8%	1,195	14.6%	598	7.3%		

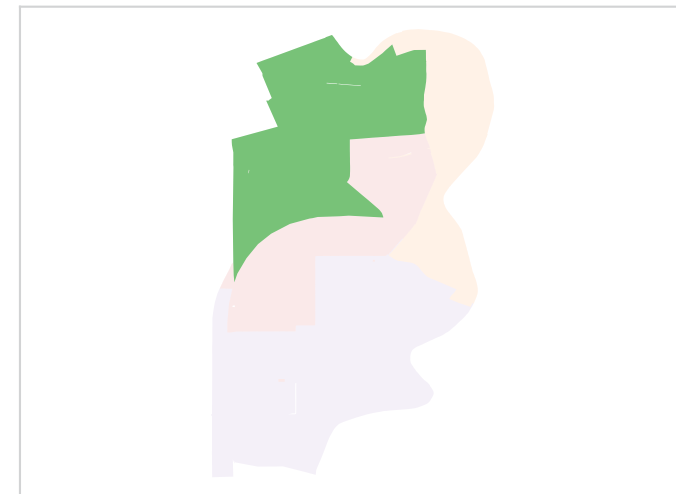
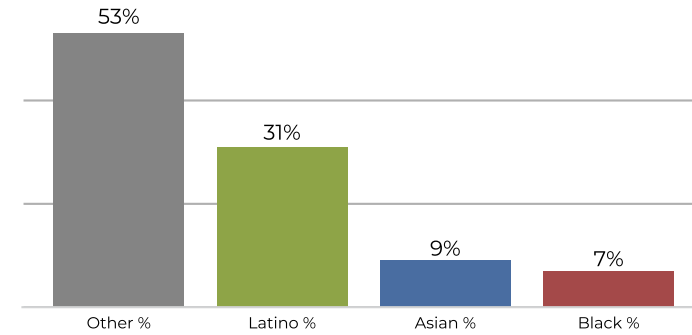
District 2



2020 Census

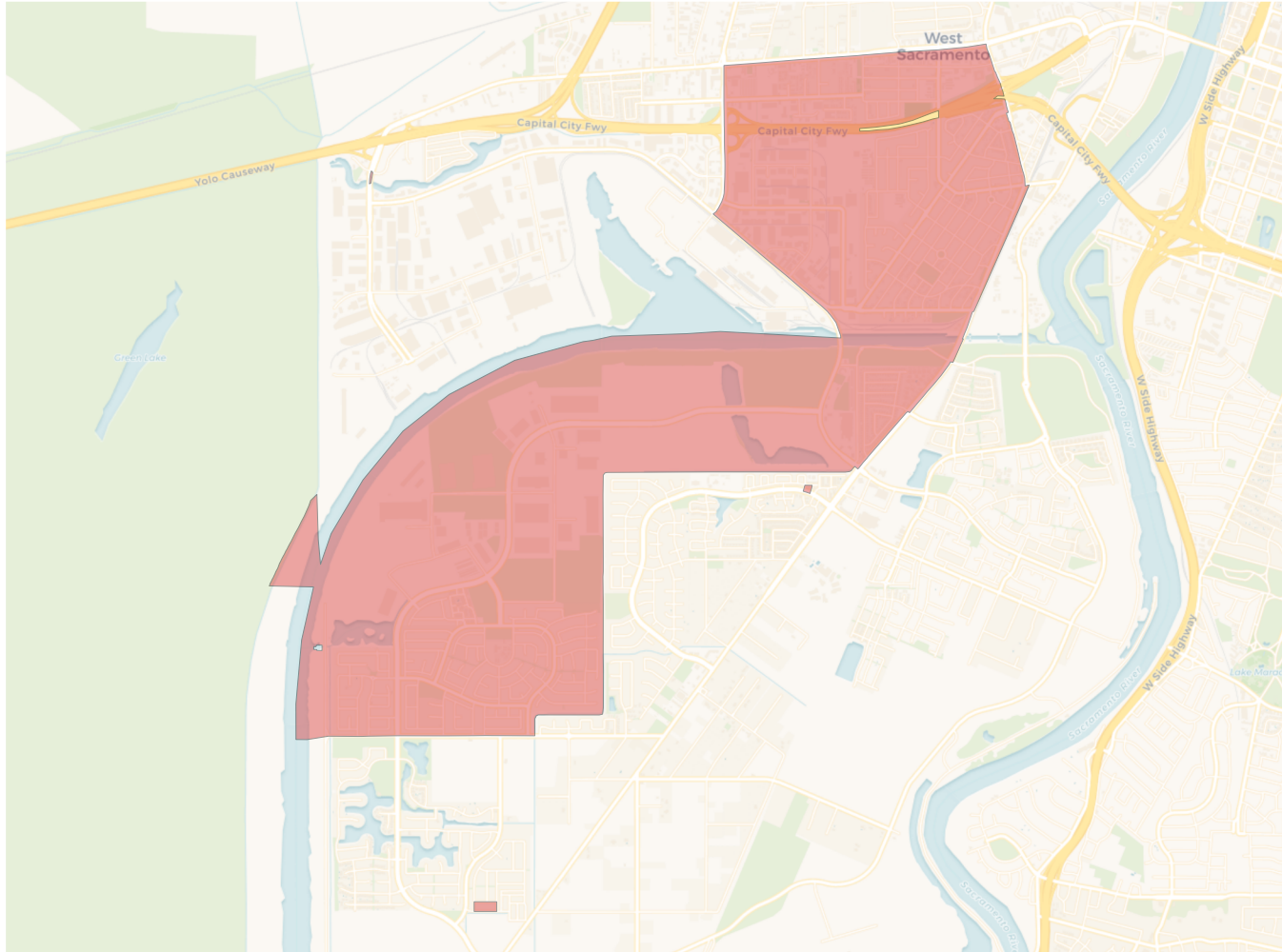


Citizen Voting Age Population

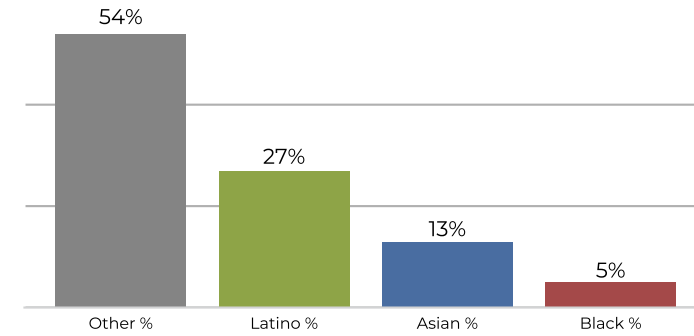


Population	Deviation	Deviation %	Other	Other %	Latino	Latino %	Asian	Asian %	Black	Black %
13,795	277	2.0%	5,847	42.4%	6,526	47.3%	927	6.7%	495	3.6%
Total CVAP	Other CVAP	Other CVAP %	Latino CVAP	Latino CVAP %	Asian CVAP	Asian CVAP %	Black CVAP	Black CVAP %		
7,373	3,909	53.0%	2,283	31.0%	666	9.0%	515	7.0%		

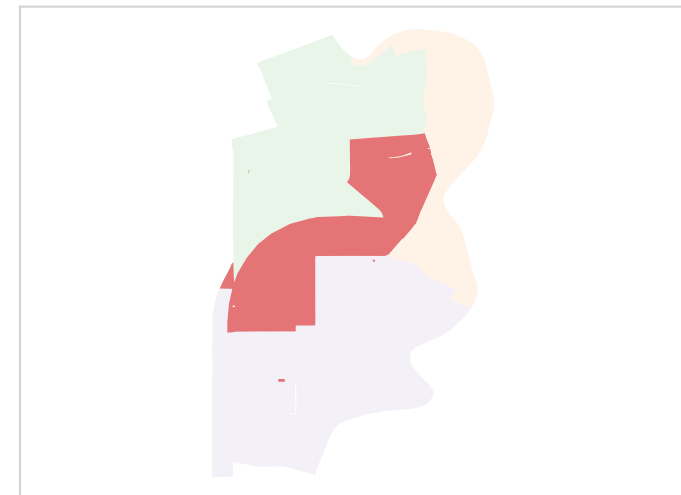
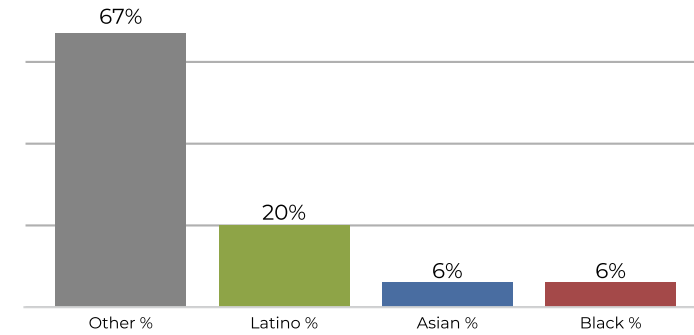
District 3



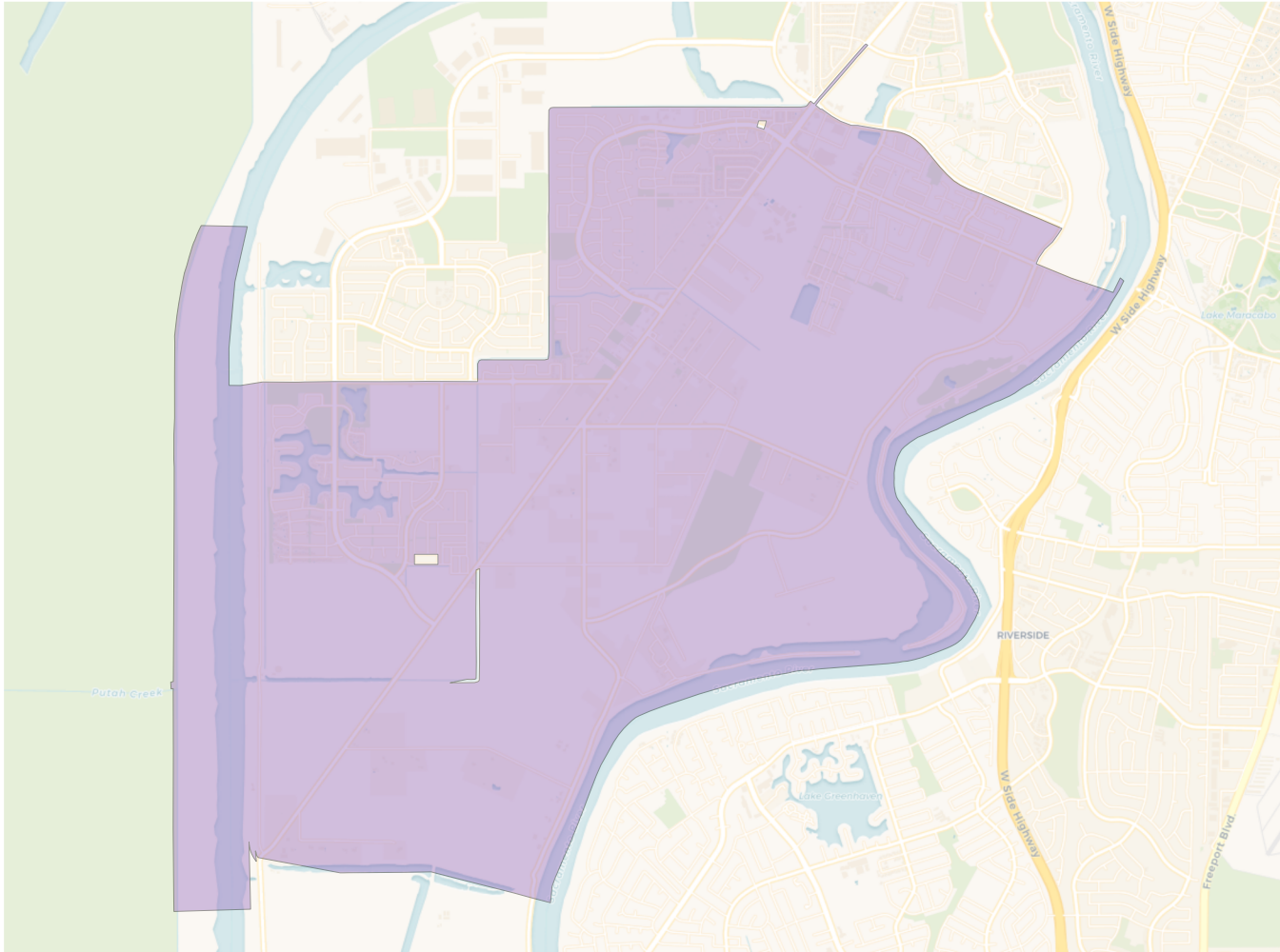
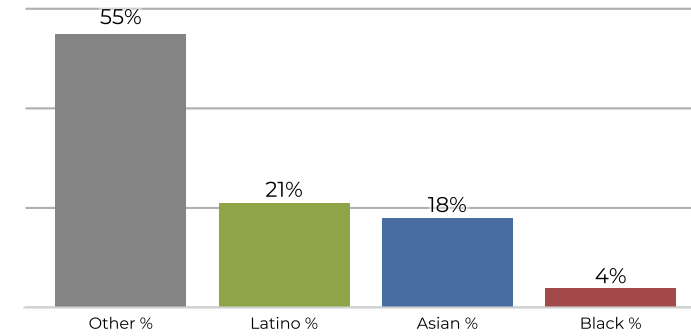
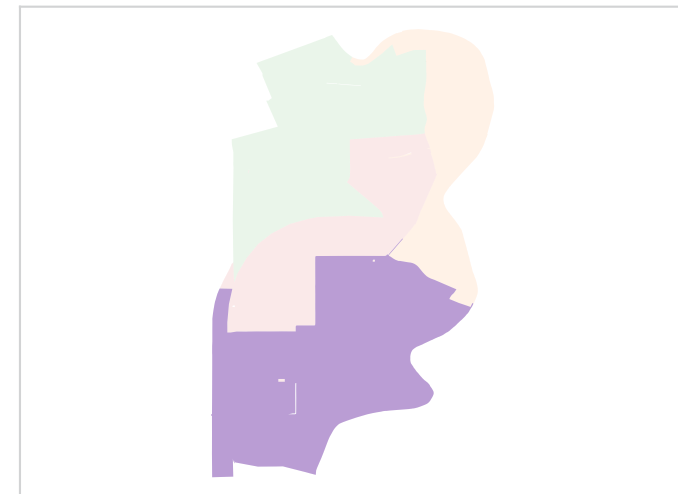
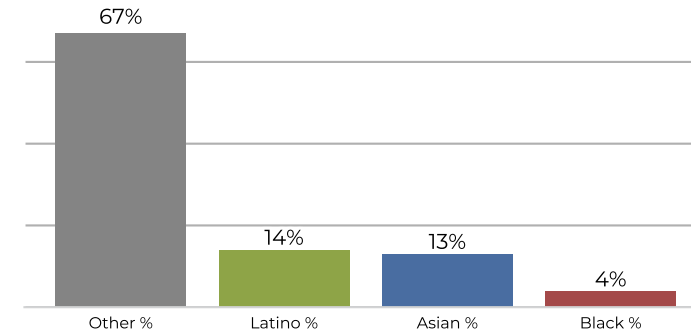
2020 Census



Citizen Voting Age Population



Population	Deviation	Deviation %	Other	Other %	Latino	Latino %	Asian	Asian %	Black	Black %
13,285	-233	-1.7%	7,224	54.4%	3,626	27.3%	1,757	13.2%	678	5.1%
Total CVAP	Other CVAP	Other CVAP %	Latino CVAP	Latino CVAP %	Asian CVAP	Asian CVAP %	Black CVAP	Black CVAP %		
8,457	5,685	67.2%	1,709	20.2%	556	6.6%	507	6.0%		

District 4

2020 Census

Citizen Voting Age Population


Population	Deviation	Deviation %	Other	Other %	Latino	Latino %	Asian	Asian %	Black	Black %
13,902	384	2.8%	7,731	55.6%	2,995	21.5%	2,567	18.5%	609	4.4%
Total CVAP	Other CVAP	Other CVAP %	Latino CVAP	Latino CVAP %	Asian CVAP	Asian CVAP %	Black CVAP	Black CVAP %		
9,522	6,441	67.6%	1,368	14.4%	1,263	13.3%	450	4.7%		