

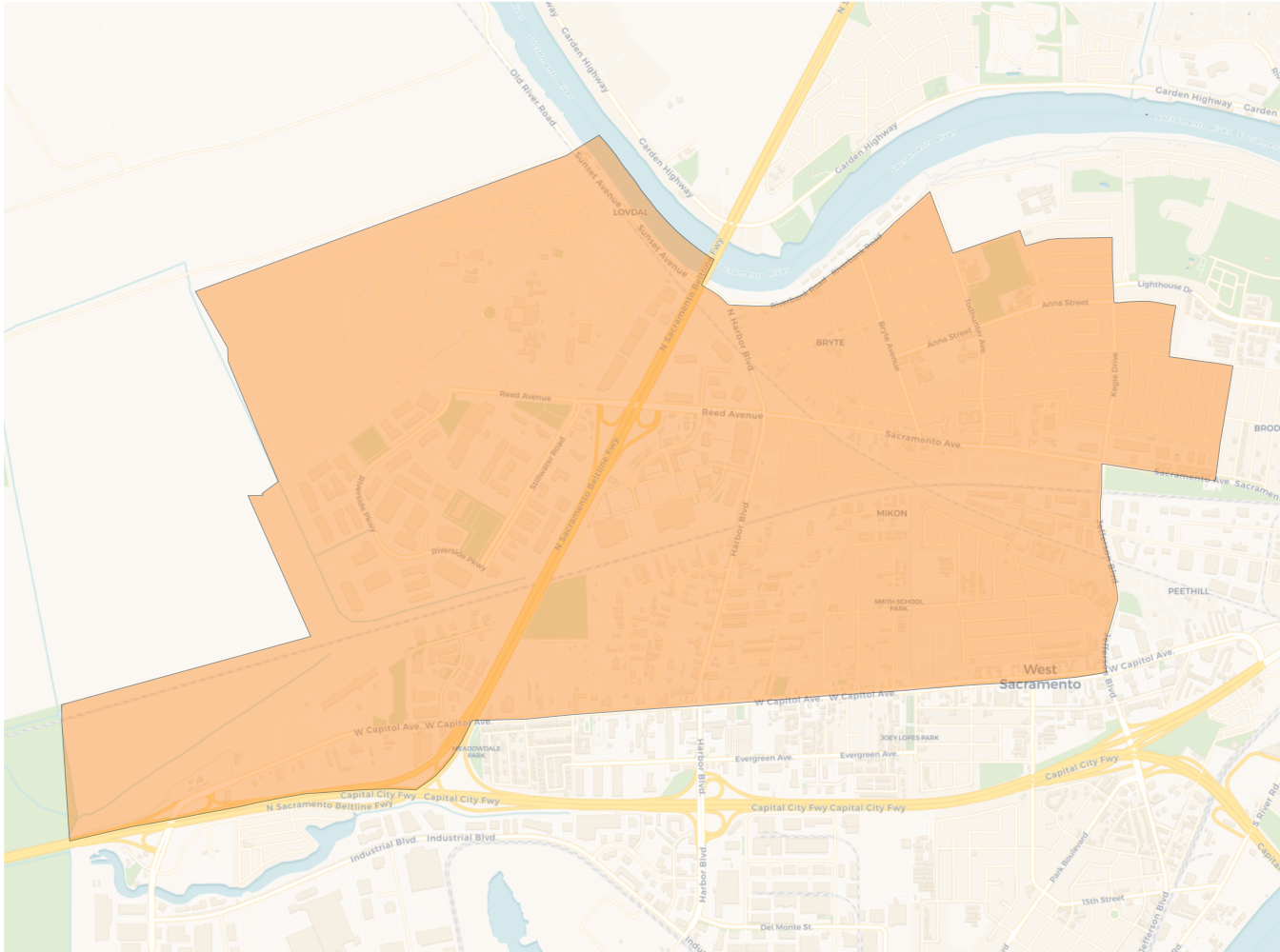
**2020 Census**

	1	2	3	4
Population	13,615	13,808	13,406	13,248
Deviation	96	289	-113	-271
Deviation %	0.7%	2.1%	-0.8%	-2.0%
Other	5,582	7,153	6,939	7,412
Other %	41.0%	51.8%	51.8%	55.9%
Latino	6,649	4,422	3,288	2,965
Latino %	48.8%	32.0%	24.5%	22.4%
Asian	928	1,490	2,356	2,370
Asian %	6.8%	10.8%	17.6%	17.9%
Black	456	743	823	501
Black %	3.3%	5.4%	6.1%	3.8%

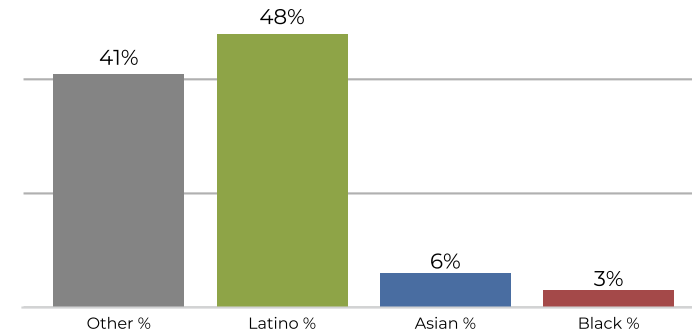
**Citizen Voting Age Population (CVAP)**

	1	2	3	4
Total CVAP	7,472	8,947	8,345	8,780
Other CVAP	3,899	5,557	5,246	5,947
Other CVAP %	52.2%	62.1%	62.9%	67.7%
Latino CVAP	2,345	2,251	1,487	1,062
Latino CVAP %	31.4%	25.2%	17.8%	12.1%
Asian CVAP	652	501	1,065	1,462
Asian CVAP %	8.7%	5.6%	12.8%	16.7%
Black CVAP	576	638	547	309
Black CVAP %	7.7%	7.1%	6.6%	3.5%

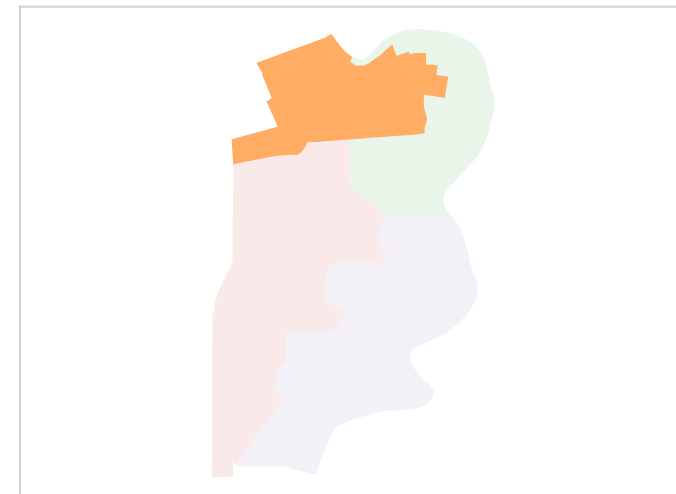
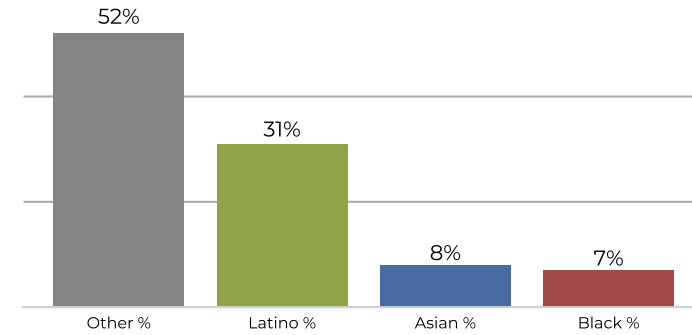
**District 1**



**2020 Census**

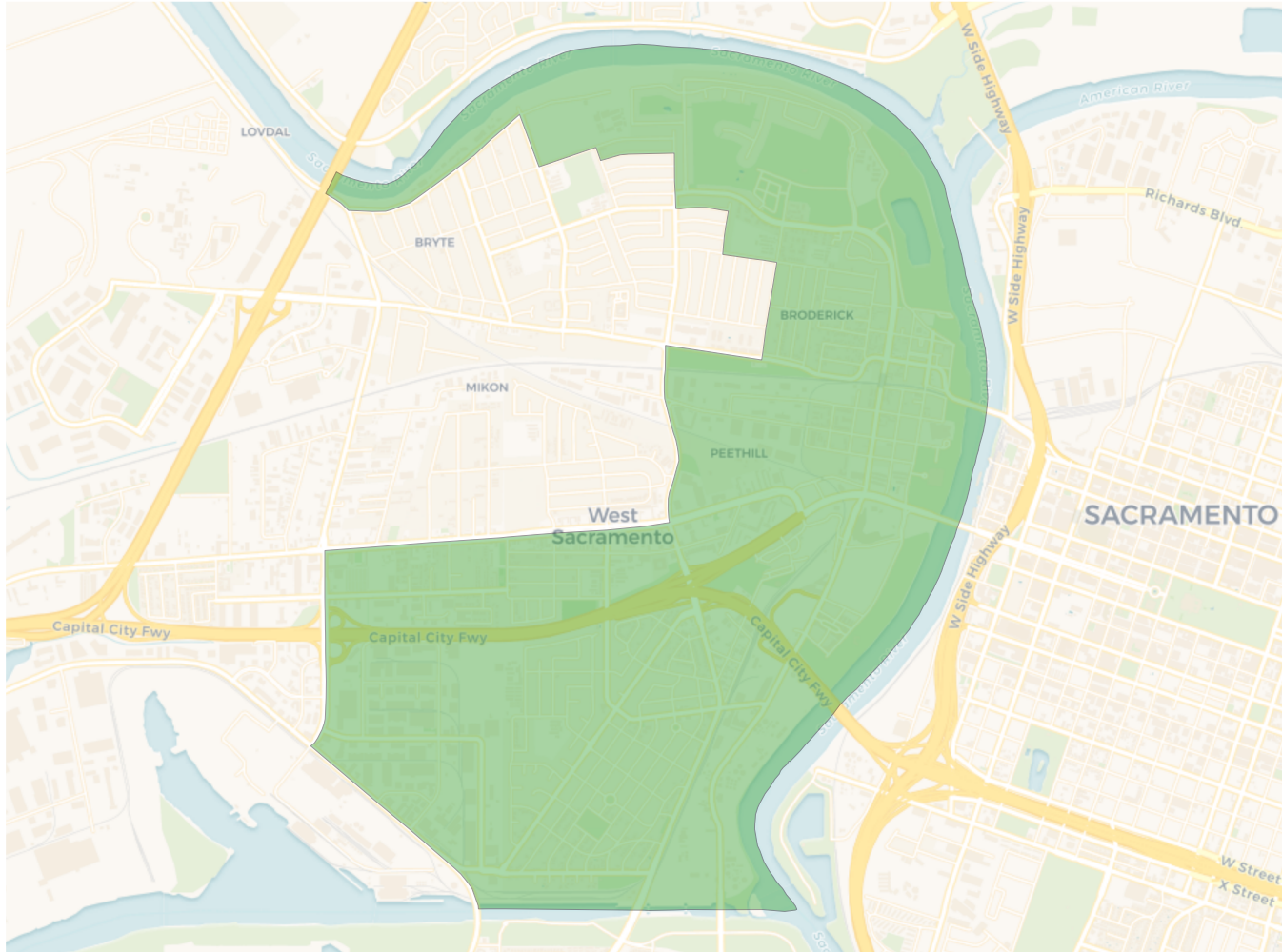


**Citizen Voting Age Population**

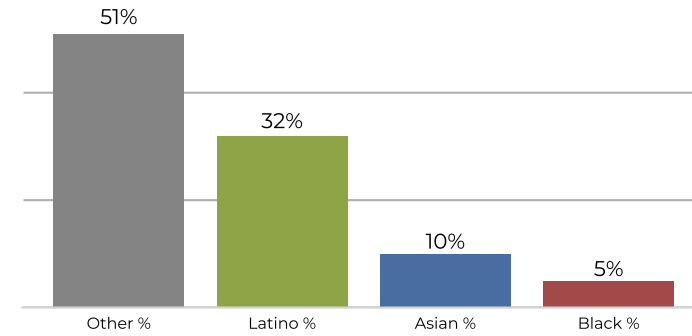


Population	Deviation	Deviation %	Other	Other %	Latino	Latino %	Asian	Asian %	Black	Black %
13,615	96	0.7%	5,582	41.0%	6,649	48.8%	928	6.8%	456	3.3%
Total CVAP	Other CVAP	Other CVAP %	Latino CVAP	Latino CVAP %	Asian CVAP	Asian CVAP %	Black CVAP	Black CVAP %		
7,472	3,899	52.2%	2,345	31.4%	652	8.7%	576	7.7%		

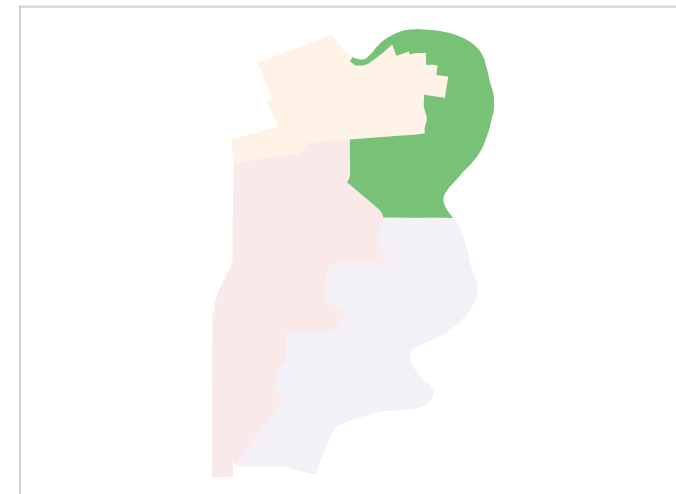
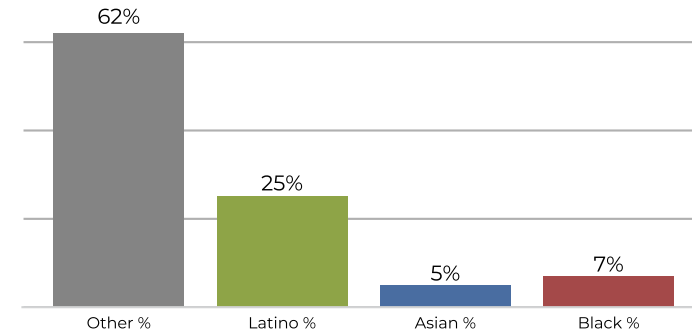
**District 2**



**2020 Census**

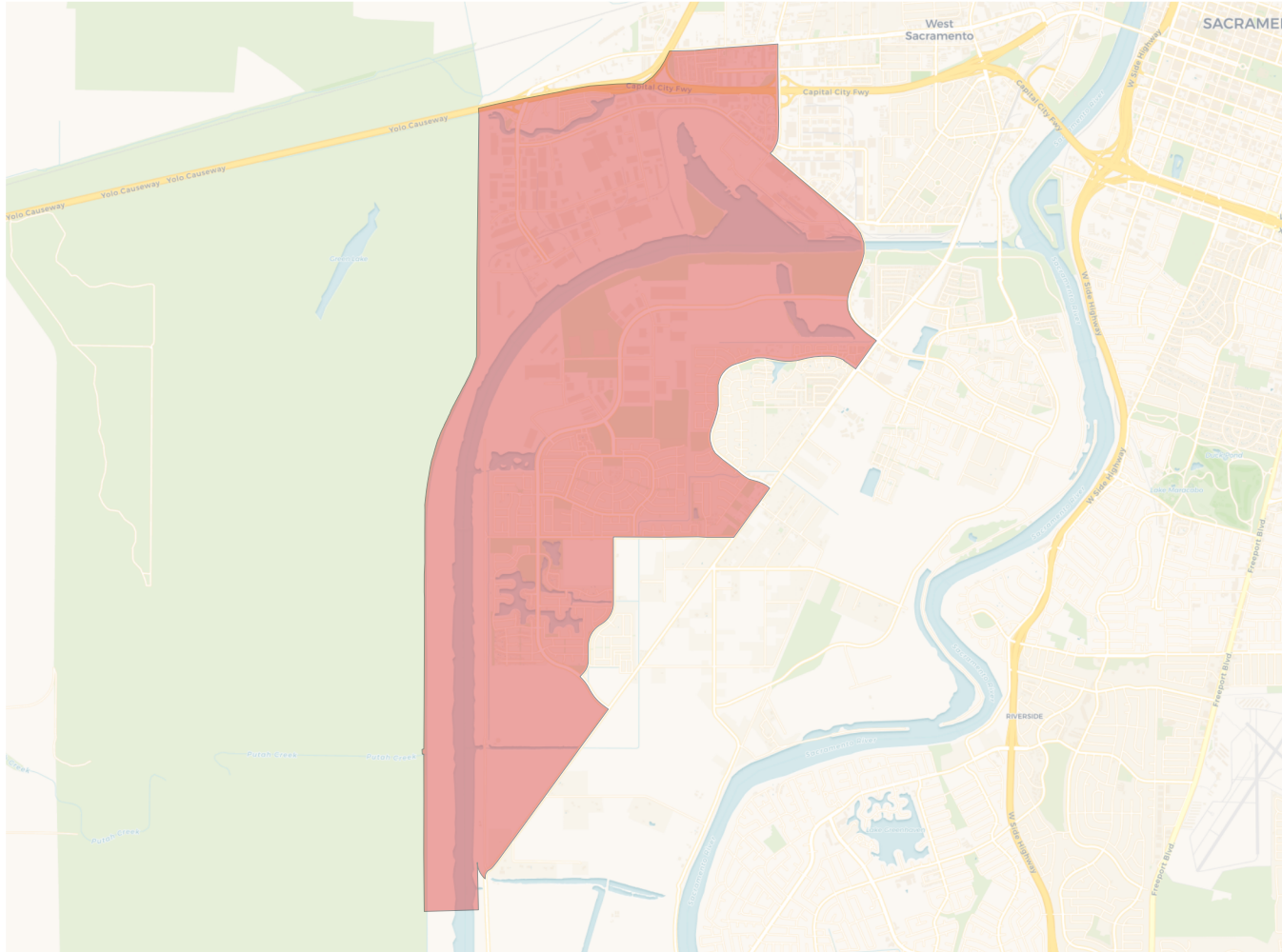


**Citizen Voting Age Population**

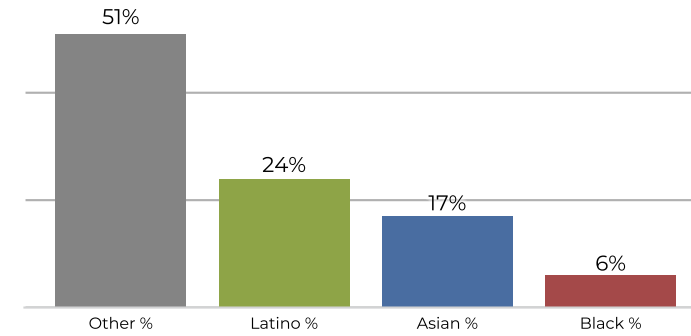


Population	Deviation	Deviation %	Other	Other %	Latino	Latino %	Asian	Asian %	Black	Black %
13,808	289	2.1%	7,153	51.8%	4,422	32.0%	1,490	10.8%	743	5.4%
Total CVAP	Other CVAP	Other CVAP %	Latino CVAP	Latino CVAP %	Asian CVAP	Asian CVAP %	Black CVAP	Black CVAP %		
8,947	5,557	62.1%	2,251	25.2%	501	5.6%	638	7.1%		

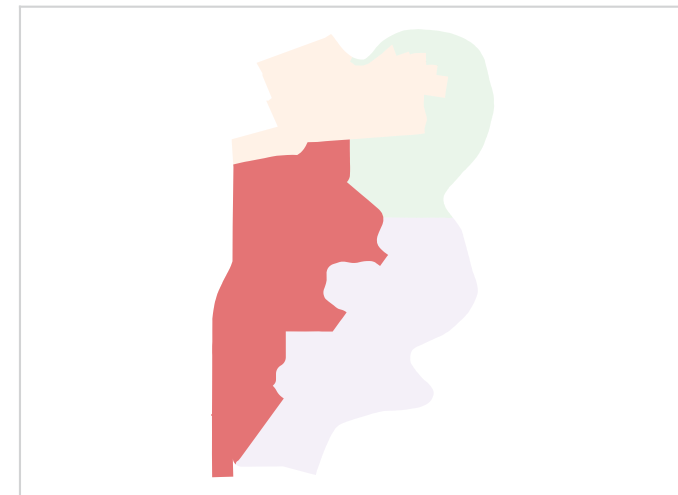
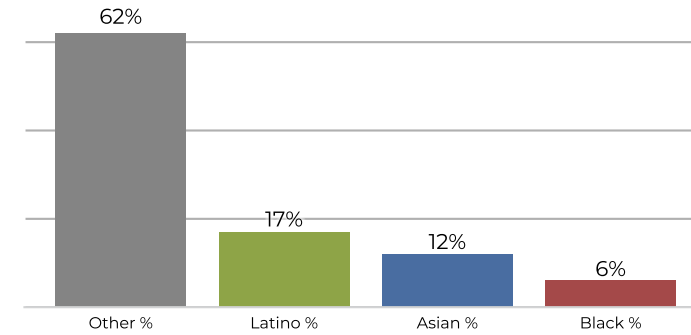
**District 3**



**2020 Census**

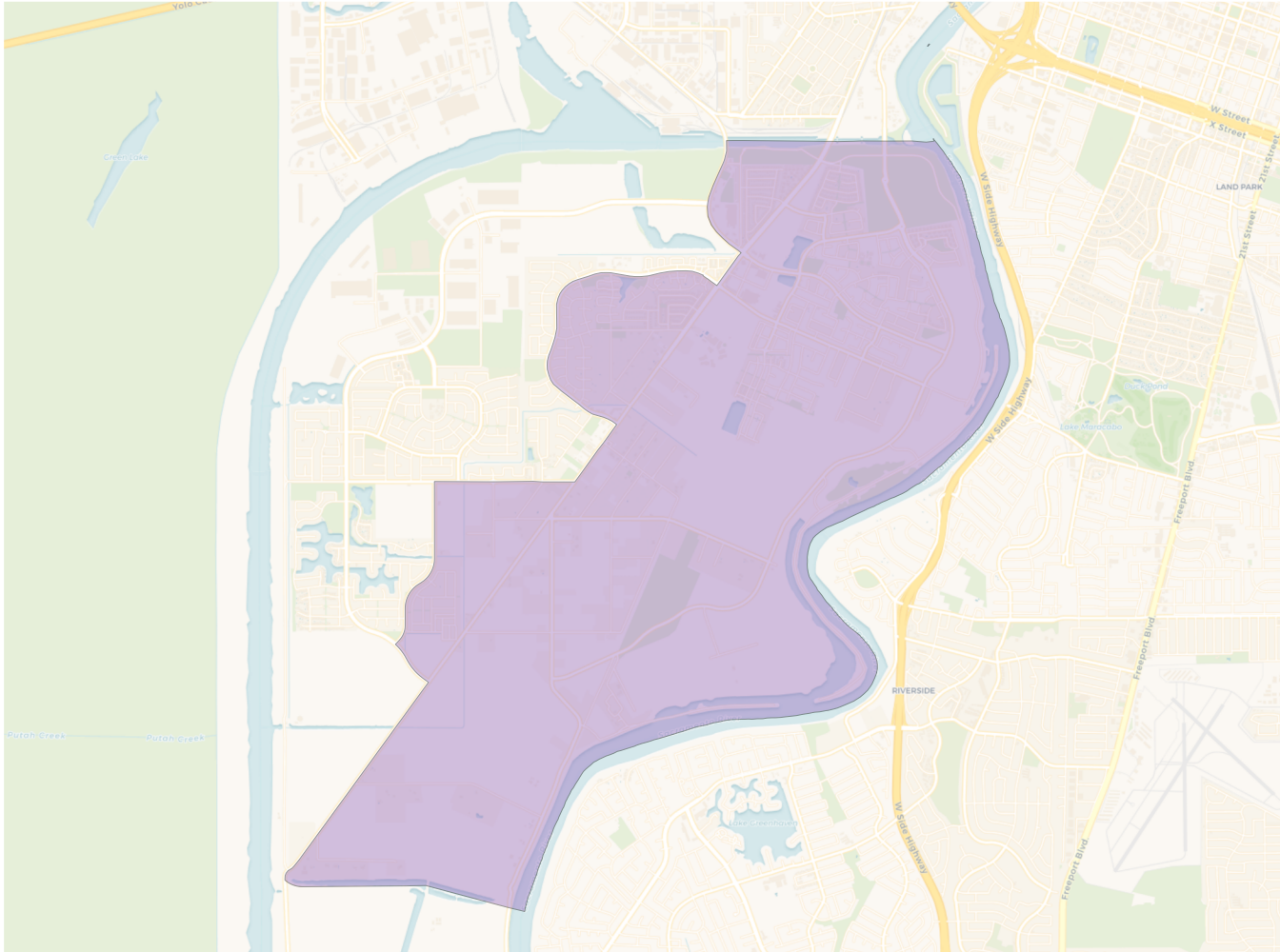


**Citizen Voting Age Population**

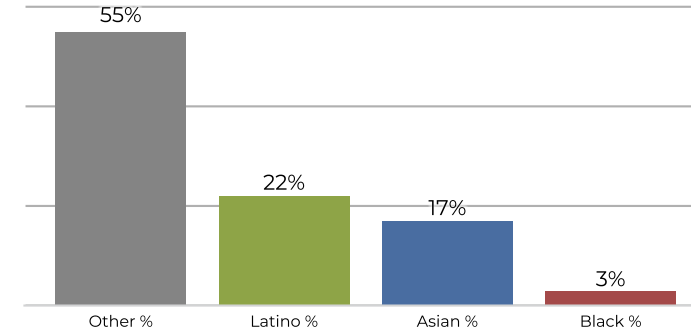


Population	Deviation	Deviation %	Other	Other %	Latino	Latino %	Asian	Asian %	Black	Black %
13,406	-113	-0.8%	6,939	51.8%	3,288	24.5%	2,356	17.6%	823	6.1%
Total CVAP	Other CVAP	Other CVAP %	Latino CVAP	Latino CVAP %	Asian CVAP	Asian CVAP %	Black CVAP	Black CVAP %		
8,345	5,246	62.9%	1,487	17.8%	1,065	12.8%	547	6.6%		

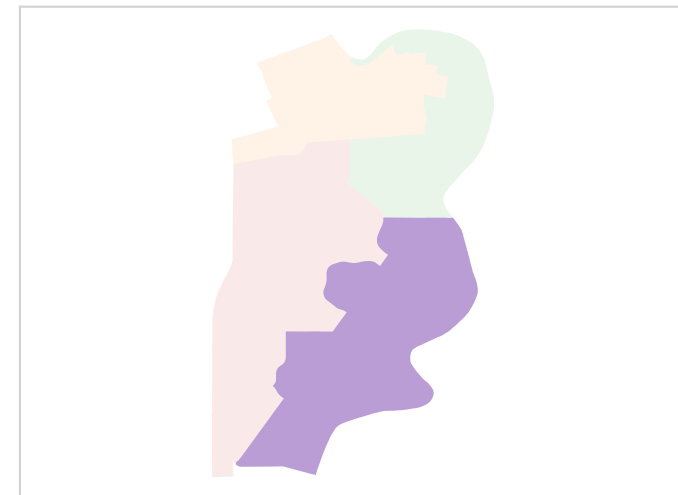
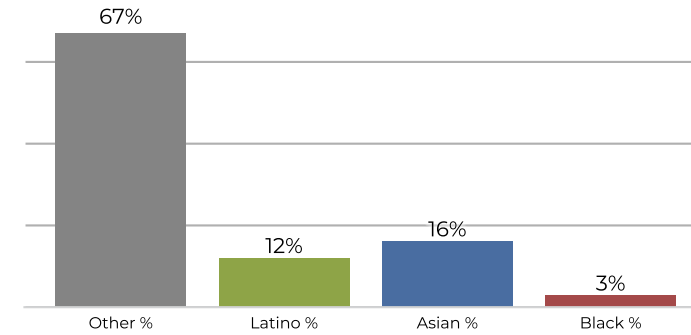
**District 4**



**2020 Census**



**Citizen Voting Age Population**



Population	Deviation	Deviation %	Other	Other %	Latino	Latino %	Asian	Asian %	Black	Black %
13,248	-271	-2.0%	7,412	55.9%	2,965	22.4%	2,370	17.9%	501	3.8%
Total CVAP	Other CVAP	Other CVAP %	Latino CVAP	Latino CVAP %	Asian CVAP	Asian CVAP %	Black CVAP	Black CVAP %		
8,780	5,947	67.7%	1,062	12.1%	1,462	16.7%	309	3.5%		